

**TECHNICAL MANUAL**

**ORGANIZATIONAL, DIRECT SUPPORT, AND  
GENERAL  
SUPPORT MAINTENANCE REPAIR PARTS AND  
SPECIAL TOOLS LISTS**

**(INCLUDING DEPOT MAINTENANCE REPAIR  
PARTS AND SPECIAL TOOLS)**

**FOR**

**GYROMAGNETIC COMPASS SET  
AN/ASN-43 AND AN/ASN-43A**

**( NSN 6605-00-069-8762)**

---

**HEADQUARTERS, DEPARTMENT OF THE ARMY**

**MARCH 1977**



TECHNICAL MANUAL }  
 No. 11-6605-202-24P }

**HEADQUARTERS**  
**DEPARTMENT OF THE ARMY**  
 WASHINGTON, DC, 28 March 1977

**ORGANIZATIONAL, DIRECT SUPPORT, AND GENERAL SUPPORT MAINTENANCE**  
**REPAIR PARTS AND SPECIAL TOOLS LISTS**

**(INCLUDING DEPOT MAINTENANCE REPAIR PARTS AND SPECIAL TOOLS)**

**FOR**

**GYROMAGNETIC COMPASS SET AN/ASN-43 AND AN/ASN-43A**

(NSN 6605-00-069-8762)

**Current as of 29 October 1976**

**REPORTING OF ERRORS**

**You can improve this manual by recommending improvements using DA Form 2028-2 (Test ) located in the back of the manual. Simply tear out the self-addressed form, fill it out as shown on the sample, fold it where shown, and drop it in the mail.**

**If there are no blank DA Form 2028-2 (Test) in the back of your manual, use the standard DA Form 2028 (Recommended Changes to Publications and Blank Forms) and forward to Commander, US Army Electronics Command, ATTN: DRSEL-MA-Q, Fort Monmouth, NJ 07703.**

**In either case, a reply will be furnished direct to you.**

**Table of Contents**

		Page	Illus Figure
SECTION	I. Introduction . . . . .	1	
	II. Repair parts list . . . . .	5	
Group	00 Gyromagnetic Compass Set AN/ASN-43 and AN/ASN-43A. . . . .	5	1
	01 Magnetic Flux Compensator CN-405/ASN (No parts authorised)		
	02 Induction Compass Transmitter T-611/ASN . . . . .	7	2
	03 Gyro, Directional CN-9980/ASN-43. . . . .	11	3
	0301 Amplifier section . . . . .	13	4
	Amplifier base subassembly A1 . . . . .	15	5
	Amplifier, electronic control assembly A2, CN-998/ASN-43 and CN-998A/ASN-43 (sheets land 2) . . . . .	19	6
	Amplifier, electronic control assembly A2, CN-998B/ASN-43. . . . .	23	7
	0302 Gyro section . . . . .	27	8
	Gimbal assembly, CN-998/ASN-43, CN-998A/ASN-43, and CN-998B/ASN-43	29	9
	Gyroassembly, CN-998/ASN-43 . . . . .	31	10
	Gyro assembly, CN-998A/ASN-43 and CN-998B/ASN-43	33	11
Group	04 Bulk material . . . . .	34	
SECTION	III. Special tools list (NOT APPLICABLE)		
	IV. National stock number and part number index	35	

\* This manual supersedes TM 11-6605-202-25P, 6 June 1966.



# SECTION I

## INTRODUCTION

---

### 1. Scope

This manual lists repair parts required for performance of organizational, direct support, general support, and depot maintenance of the AN/ASN-43 and AN/ASN-43A.

### 2. General

This Repair Parts and Special Tools List is divided into the following sections:

*a. Section II - Repair Parts List.* A list of repair parts authorized for use in the performance of maintenance. The list also includes parts which must be removed for replacement of the authorized parts. Parts lists are composed of functional groups in ascending numerical sequence, with the parts in each group listed in figure and item number sequence. Bulk materials are listed in NSN sequence.

*b. Section III - Special Tools List.* Not applicable.

*c. Section IV - National Stock Number and Part Number Index.* A list, in ascending numerical sequence, of all National stock numbers appearing in the listings, followed by a list, in alphanumeric sequence, of all part numbers appearing in the listings. National stock numbers and part numbers are cross-referenced to each illustration figure and item number appearance.

### 3. Explanation of Columns

The following provides an explanation of columns found in the tabular listings:

*a. Illustration.* This column is divided as follows:

(1) *Figure number.* Indicates the figure number of the illustration in which the item is shown.

(2) *Item number.* The number used to identify each item called out in the illustration.

*b. Source, Maintenance, and Recoverability Codes (SMR).*

(1) *Source code.* Source codes are assigned to support items to indicate the manner of acquiring support items for maintenance, repair, or overhaul of end items. Source codes are entered in the first and second positions of the Uniform SMR Code format as follows:

code	<i>Definition</i>
PA	Item procured and stocked for anticipated or known usage.
PD	Support item, excluding support equipment,

<i>Code</i>	<i>Definition</i>
	procured for initial issue or outfitting and stocked only for subsequent or additional initial issues or outfittings. Not subject to automatic replenishment.
MH	Item to be manufactured or fabricated at the general support maintenance level.
XA	Item is not procured or stocked because the requirements for the item will result in the replacement of the next higher assembly.
XD	A support item that is not stocked. When required, item will be procured through normal supply channels.

#### NOTE

Cannibalization or salvage may be used as a source of supply for any items source-coded above, except those coded XA, XD, and aircraft support items as restricted by AR 700-42.

(2) *Maintenance code.* Maintenance codes are assigned to indicate the levels of maintenance authorized to USE and REPAIR support items. The maintenance codes are entered in the third and fourth positions of the Uniform SMR Code format as follows:

(a) The maintenance code entered in the third position will indicate the lowest maintenance level authorized to remove, replace, and use the support item. The maintenance code entered in the third position will indicate one of the following levels of maintenance

<i>Code</i>	<i>Application/Explanation</i>
O	Support item is removed, replaced, used at the organizational level.
F	Support item is removed, replaced, used at the direct support level.
H	Support item is removed, replaced, used at the general support level.
D	Support items that are removed, replaced, used at depot, mobile depot, specialized repair activity only.

(b) The maintenance code entered in the fourth position indicates whether the item is to be repaired and identifies the lowest maintenance level with the capability to perform complete repair (i.e., all authorized maintenance functions). This position will contain one of the following maintenance codes:

- |      |                                |
|------|--------------------------------|
| Code | <i>Application/Explanation</i> |
|------|--------------------------------|
- H - The lowest maintenance level capable of complete repair of the support item is the general support level.
  - D - The lowest maintenance level capable of complete repair of the support item is the depot level, performed by depot.
  - Z - Nonreparable. No repair is authorized.

(3) *Recoverability code.* Recoverability codes are assigned to support items to indicate the disposition action on unserviceable items. The recoverability code is entered in the fifth position of the Uniform SMR Code format as follows:

<i>Recoverability code</i>	<i>Definition</i>
Z -	Nonreparable item. When unserviceable, condemn and dispose at the level indicated in position 3.
H -	Reparable item. When uneconomically repairable, condemn and dispose at the general support level.
D -	Reparable item. When beyond lower level repair capability, return to depot. Condemnation and disposal not authorized below depot level.
L -	Reparable item. Repair, condemnation, and disposal not authorized below depot/specialized repair activity level.
A -	Item requires special handling or condemnation procedures because of specific reasons (i.e., precious metal content, high dollar value, critical material or hazardous material). Refer to appropriate manuals/directives for specific instructions.

*c. National Stock Number.* Indicates the National stock number assigned to the item and will be used for requisitioning purposes.

*d. Part Number.* Indicates the primary number used by the manufacturer (individual, company, firm, corporation, or Government activity), which controls the design and characteristics of the item by means of its engineering drawings, specifications standards, and inspection requirements, to identify an item or range of items.

**NOTE**

When a stock-numbered item is requisitioned, the repair part received may have a different part number than the part being replaced.

*e. Federal Supply Code for Manufacturer (FSCM).* The FSCM is a 5-digit numeric code listed in SB 708-42 which is used to identify the manufacturer, distributor, or Government agency, etc.

*f. Description.* Indicates the Federal item name and, if required, a minimum description to identify the item. When the part to be used differs between

serial numbers of the same model, the effective serial numbers are shown as the last line of the description.

*g. Unit of Measure (U/M).* Indicates the standard of the basic quantity of the listed item as used in performing the actual maintenance function. This measure is expressed by a two-character alphabetical abbreviation (e.g., ea, in, pr, etc). When the unit of measure differs from the unit of issue, the lowest unit of issue that will satisfy the required units of measure will be requisitioned.

*h. Quantity Incorporated in Unit.* Indicates the quantity of the item used in the breakout shown on the illustration figure, which is prepared for a functional group, sub functional group, or an assembly. A "V" appearing in this column in lieu of a quantity indicates that no specific quantity is applicable, (e. g., shims, spacers, etc).

**4. Special Information**

*a.* Usable on codes are shown in the description column. Uncoded items are applicable to all models. Identification of the usable on codes used in this publication are:

<i>Code</i>	<i>Used on</i>
AN/ASN-43	CRB
AN/ASN-43A	CCB

*b.* Detailed manufacturing instructions for items source-coded to be manufactured or fabricated are found in TM 11-6605-202-35. Bulk materials required to manufacture items are listed in the Bulk Material Group of this manual.

*c.* The following publications pertain to the AN/ASN-43 and the AN/ASN-43A and their components:

- TM 11-6605-202-12 - Gyromagnetic Compass Set AN/ASN-43
- TM 11-6605-202-35 - Gyromagnetic Compass Set AN/ASN-43

**5. How to Locate Repair Parts**

*a.* When National stock number or part number is unknown:

(1) *First.* Using the table of contents, determine the functional group or subgroup within which the repair part belongs. This is necessary since illustrations are prepared for functional groups or subgroups, and listings are divided into the same groups.

(2) *Second.* Find the illustration covering the functional group or subgroup to which the repair part belongs.

(3) *Third.* Identify the repair part on the illustration and note the illustration figure and item number of the repair part.

(4) *Fourth.* Using the Repair Parts Listing, find the figure and item number noted on the illustration.

b. When National stock number or part number is known:

(1) *First.* Using the Index of National Stock Numbers and Part Numbers, find the pertinent National stock number or part number. This index is in ascending NSN sequence, followed by a list of part numbers in ascending alphanumeric sequence, cross-

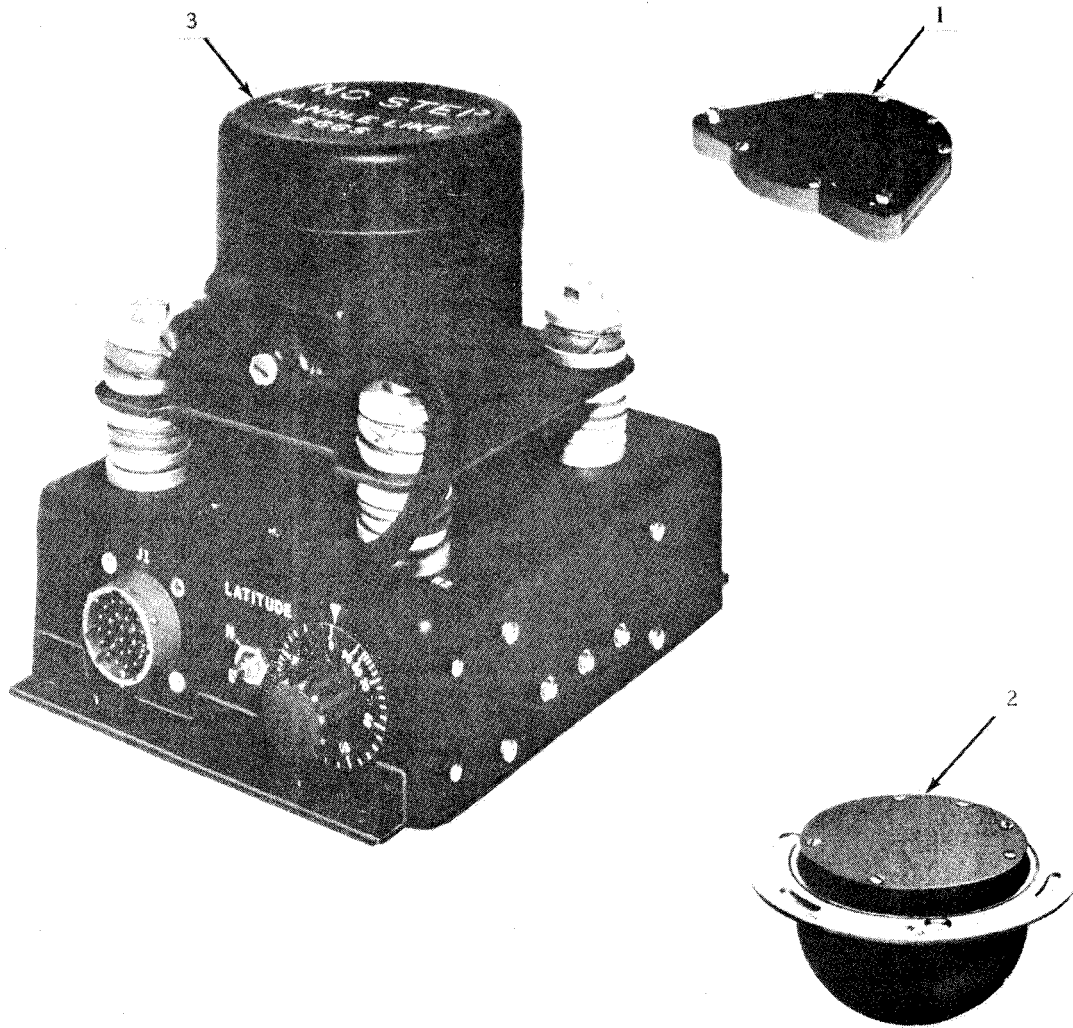
referenced to the illustration figure number and item number.

(2) *Second.* After finding the figure and item number, locate the figure and item number in the repair parts list.

**6. Abbreviations**

(Not applicable)

**(Next printed page is 4.)**



EL0KX024

Figure 1. Gyromagnetic Compass Set AN/ASN-43 and AN/ASN-43A.



SECTION II. REPAIR PARTS LIST

(1) ILLUSTRATION		(2) SMR CODE	(3) NATIONAL STOCK NUMBER	(4) PART NUMBER	(5) FSCM	(6) DESCRIPTION	USABLE ON CODE	(7) UNIT OF MEAS	(8) QTY INC UNIT
(A) FIG NO.	(B) ITEM NO.								
						GROUP: 00 GYROMAGNETIC COMPASS SET AN/ASN-43 AND AN/ASN-43A			
1	1	PAFZA	6605-00-487-4773	2590056	07187	MAGNETIC FLUX COMPENSATOR CN-405/ASN		EA	1
1	2	PAFDL	6605-00-531-2992	2590057	07187	TRANSMITTER, COMPASS T-611/ASN		EA	1
1	3	PDODD	6615-00-913-8715	2587451-1	07187	GYRO, DIRECTIONAL	CRB	EA	1
1	3	PDODD	6615-00-167-9757	2587451-3	07187	GYRO, DIRECTIONAL	CCB	EA	1

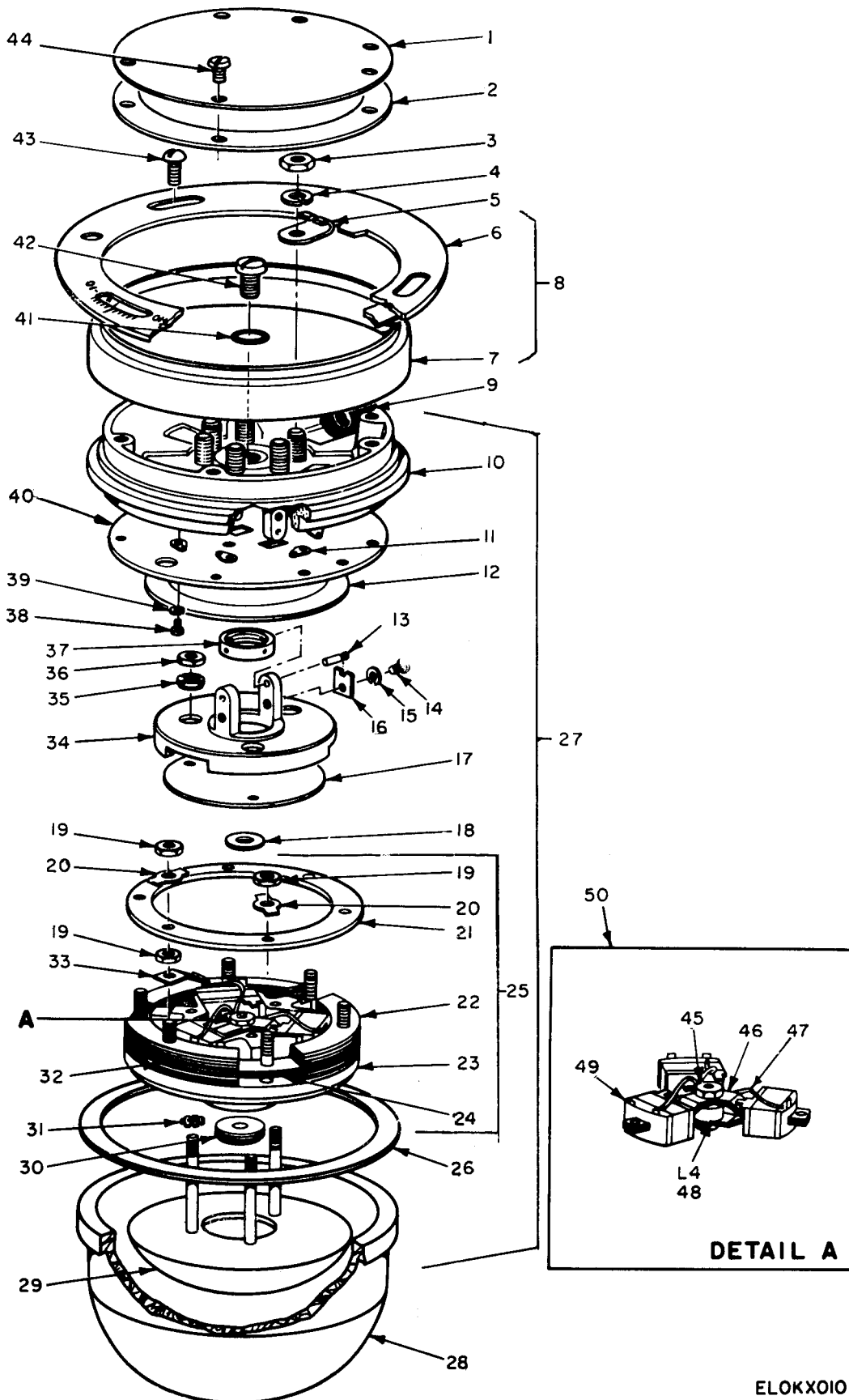


Figure 2. Transmitter, Induction Compass T-611/ASN.

ELOKXOIO

SECTION II. REPAIR PARTS LIST (CONTINUED)

(1) ILLUSTRATION		(2) SMR CODE	(3) NATIONAL STOCK NUMBER	(4) PART NUMBER	(5) FSCM	(6) DESCRIPTION	(7) UNIT OF MEAS	(8) QTY INC IN UNIT
(A) FIG NO.	(B) ITEM NO.							
						GROUP: 02 INDUCTION COMPASS TRANSMITTER T-611/ASN		
2	1	PADZZ	6610-00-032-0163	232759	56232	COVER	EA	1
2	2	XDDZZ		232717	56232	GASKET	EA	1
2	3	PADZZ	5310-00-934-9749	AN345B8	88044	NUT, HEX	EA	6
2	4	PADZZ	5310-00-576-0546	140861	56232	WASHER, LOCK	EA	6
2	5	XDDZZ		3012	77147	TERMINAL	EA	6
2	6	XADZZ		2582191	07187	PLATE, MOUNTING	EA	1
2	7	XADZZ		SMC545602	80063	SEAL	EA	1
2	8			SMC493448	80063	SEAL ASSEMBLY	EA	1
2	9	XDDZZ		254110	56232	GROMMET	EA	1
2	10	XDDZZ		680854	56232	COVER	EA	1
2	11	XADZZ		SMC545615	80063	CONTACT	EA	6
2	12	XDDZZ		SMC545616	80063	PAD	EA	1
2	13	PADZZ	6605-00-099-0135	318844	07187	PIN, GROOVED	EA	4
2	14	XDDZZ		287276	56232	SCREW, MACHINE	EA	4
2	15	PADZZ	5310-00-821-5749	232757	07187	WASHER, LOCK	EA	4
2	16	XDDZZ		318843	07187	LOCK	EA	4
2	17	XDDZZ		232684	56232	INSULATOR	EA	1
2	18	XDDZZ		232685	56232	WASHER	EA	1
2	19	XDDZZ		130630	56232	NUT, PLAIN HEX	EA	9
2	20	PADZZ	6605-00-654-9683	249385	56232	CLEAT, TRANSMITTER	EA	6
2	21	PADZZ	6605-00-346-1564	232688	56232	RING	EA	1
2	22	PADZZ	6605-00-657-0607	232689	07187	PLATE, VALVE	EA	30
2	23	XADZZ		SMC545599	80063	BASE, ELECTRICAL	EA	1
2	24	XDDZZ		232690	56232	SPACER	EA	6
2	25	XDDDL		232764	56232	VALVE ASSY	EA	1
2	26	PADZZ	5330-00-525-6032	249384	56232	GASKET	EA	1
2	27	XDDDL		680891	07187	COVER AND VALVE ASSEMBLY	EA	1
2	28	PADZZ	6605-00-610-5452	807803	07187	BASE	EA	1
2	29	XDDZZ		232703	56232	WEIGHT	EA	1
2	30	XDDZZ		280989	56232	PLUG ADJUSTING	EA	1
2	31	XDDZZ		851335	56232	WASHER, LOCK	EA	3
2	32	PADZZ	6605-00-650-6783	327303	56232	PLATE, INSULATOR	EA	3
2	33	XDDZZ		232687	56232	STRAP, RETAINING	EA	3
2	34	PADZZ	6605-00-328-8745	725736	07187	COVER	EA	1
2	35	XDDZZ		304561	07187	NUT, PLAIN ROUND	EA	3
2	36	XDDZZ		287279	56232	NUT, PLAIN HEXAGONAL	EA	3
2	37	PADZZ	6605-00-099-0136	856551	07187	PLATE, PIVOT	EA	1
2	38	XDDZZ		287281	56232	SCREW, MACHINE	EA	6
2	39	XDDZZ		232705	07187	WASHER, LOCK	EA	6
2	40	XDDZZ		232716	56232	CONTACT ASSEMBLY	EA	1

SECTION II. REPAIR PARTS LIST (CONTINUED)

(1) ILLUSTRATION		(2) SMR CODE	(3) NATIONAL STOCK NUMBER	(4) PART NUMBER	(5) FSCM	(6) DESCRIPTION	USABLE ON CODE	(7) UNIT OF MEAS	(8) QTY INC IN UNIT
(A) FIG NO.	(B) ITEM NO.								
2	41	PADZZ	5330-00-640-9612	AN227-3	88044	PACKING, PREFORMED		EA	1
2	42	XDDZZ		23271	56232	SCREW		EA	1
2	43	XDDZZ		319011	56232	SCREW		EA	3
2	44	PADZZ	6605-00-621-9850	287274	56232	SCREW		EA	6
2	45	PADZZ	5310-00-934-9741	873106-9	07187	NUT, PLAIN HEXAGONAL		EA	2
2	46	PADZZ	6605-00-346-1567	232699	56232	SPIDER CORE		EA	2
2	47	PADZZ	6605-00-328-8724	232698	56232	SPIDER TRANSMITTER		EA	2
2	48	PADZZ	6605-00-317-7843	232697	07187	COIL ACTUATOR		EA	1
2	49	PADZZ	6605-00-328-8723	232691	07187	COIL ASSEMBLY		EA	3
2	50	XDDDL		232758	07187	CORE ASSEMBLY		EA	1



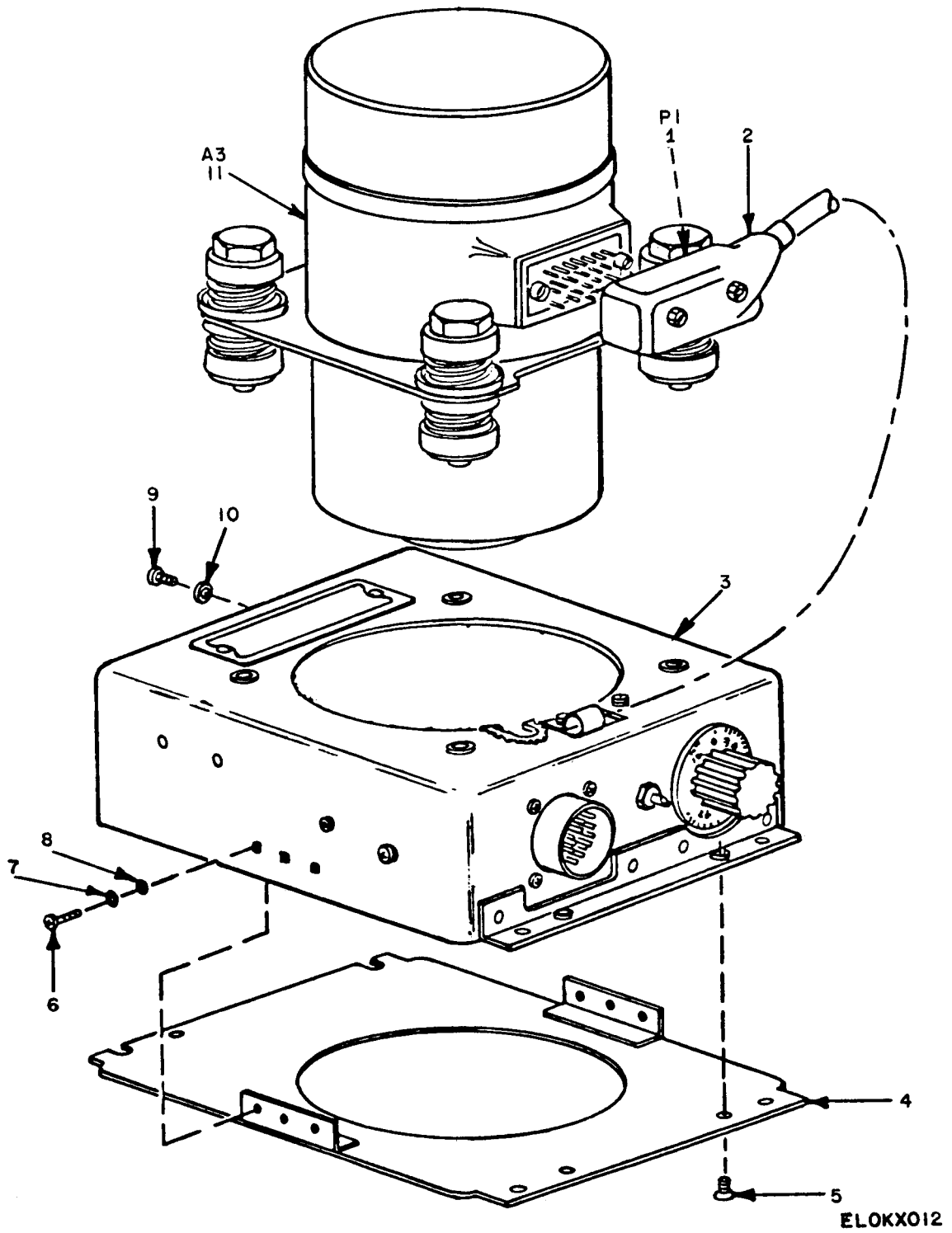
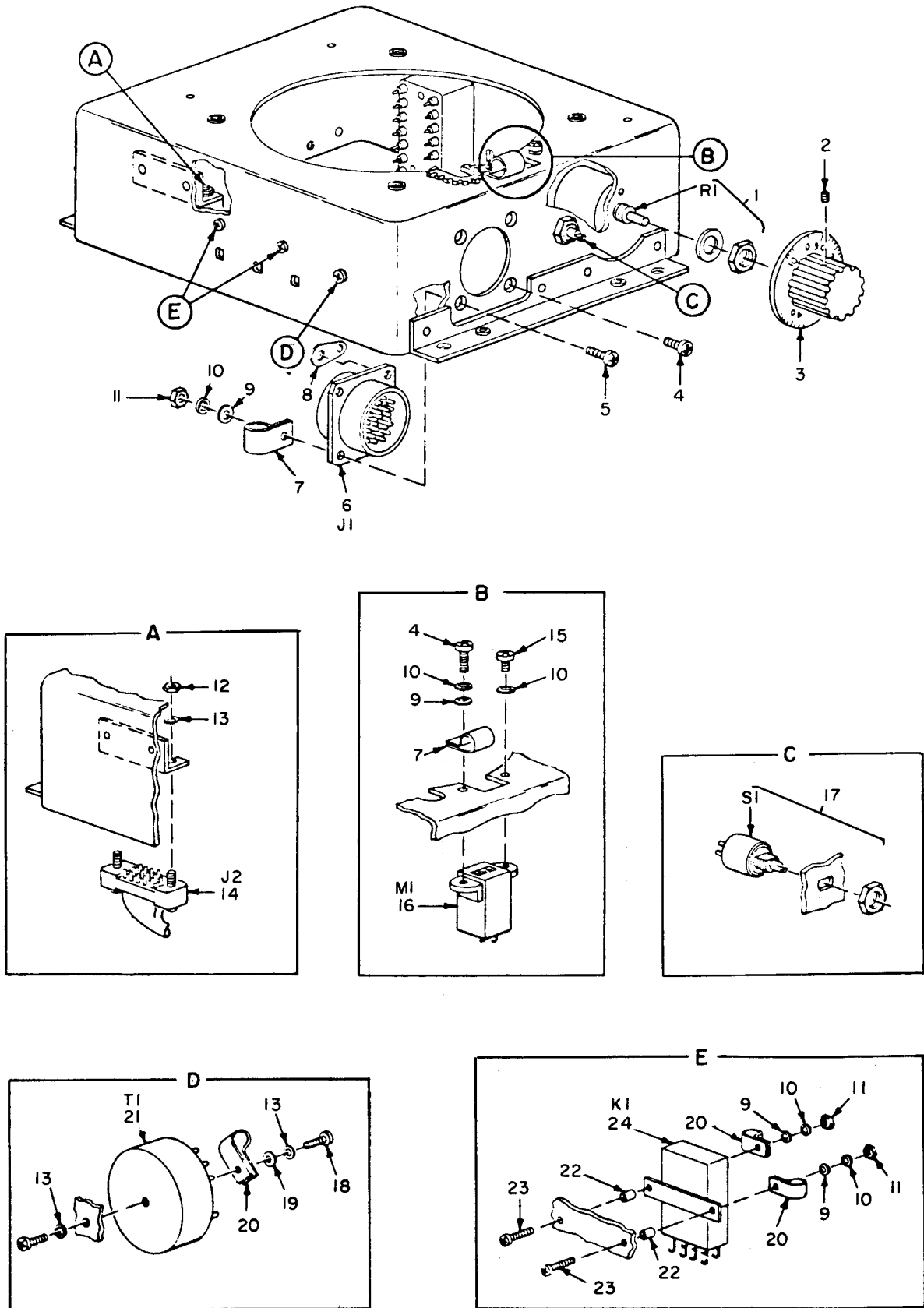


Figure 3. Directional Gyro CN-998/ASN-43, CN-998A/ASN-43, and CN-998B/ASN-43.

SECTION II. REPAIR PARTS LIST (CONTINUED)

(1) ILLUSTRATION		(2) SMR CODE	(3) NATIONAL STOCK NUMBER	(4) PART NUMBER	(5) FSCM	(6) DESCRIPTION	USABLE ON CODE	(7) UNIT OF MEAS	(8) QTY INC IN UNIT
(A) FIG NO.	(B) ITEM NO.								
						GROUP: 03 GYRO, DIRECTIONAL CN-998( ) ASN-43			
3	1	PAHZZ	5935-00-937-7362	26-20SGDSK27	95238	CONNECTOR, RECEPTACLE, ELECTRICAL		EA	1
3	2	XDHZZ		234A032-3-01	08795	BOOT		EA	1
3	3	XDHHD		258737-902	07187	BASE ASSEMBLY, GYRO	CRB	EA	1
3	3	XDHHD		2592482-901	07187	BASE ASSEMBLY, GYRO	CCB	EA	1
3	4	XDHZZ		SMD493442	80063	COVER PLATE		EA	1
3	5	PAHZZ	5305-00-727-8833	MB35249-10	96906	SCREW, MACHINE		EA	4
3	6	PAHZZ	5305-00-054-5637	MS51957-3	96906	SCREW, MACHINE		EA	6
3	7	PAHZZ	5310-00-928-2690	MS35338-77	96906	WASHER, LOCK		EA	6
3	8	PAHZZ	5310-00-595-6761	MS15795-802	96906	WASHER, FLAT		EA	6
3	9	PAHZZ	5305-00-054-5647	MS51957-13	96906	SCREW, MACHINE		EA	6
3	10	PAHZZ	5310-00-933-8118	MS35338-135	96906	WASHER, LOCK		EA	6
3	11	PADDL		SMD493408	80063	GYROSCOPE SUBASSEMBLY A3		EA	1



ELOKX013

Figure 4. Amplifier Base Assembly CN-998/ASN-43, CN-998A/ASN-43, and CN-998B/ASN-43.



SECTION II. REPAIR PARTS LIST (CONTINUED)

(1) ILLUSTRATION		(2) SMR CODE	(3) NATIONAL STOCK NUMBER	(4) PART NUMBER	(5) FSCM	(6) DESCRIPTION	USABLE ON CODE	(7) UNIT OF MEAS	(8) QTY INC IN UNIT
(A) FIG NO.	(B) ITEM NO.								
						GROUP: 0301 AMPLIFIER SECTION			
4	1	PAHZZ	5905-00-136-4052	1200-808-1	11534	RESISTOR, VARIABLE		EA	1
4	1	XDHZZ		1200-707-2	11534	RESISTOR, VARIABLE		EA	1
4	2	PAHZZ	5305-00-543-5832	MS51021-11	96906	SETSCREW		EA	1
4	3	PAHZZ	5355-00-944-4728	WB1005	92819	KNOB		EA	1
4	4	PAHZZ	5305-00-225-6400	MS24693-C3	96906	SCREW, MACHINE #4-40 X 5/16		EA	2
4	5	XDHZZ		MS24693-C5	96906	SCREW, MACHINE #4-40 X 7/16		EA	2
4	6	PAHZZ	5935-00-835-3031	MS3112E16-26P	96906	CONNECTOR, PLUG, ELECTRICAL		EA	1
4	7	PAHZZ	5340-00-999-6264	1-4-1	95987	CLAMP, LOOP		EA	2
4	8	PAHZZ	5940-00-050-2308	MS35431-3	96906	TERMMAL, LUG		EA	2
4	9	PAHZZ	5310-00-595-6211	MS15795-803	96906	WASHER, FLAT		EA	4
4	10	PAHZZ	5310-00-933-8118	MS35338-135	96906	WASHER, LOCK		EA	8
4	11	PAHZZ	5310-00-934-9748	MS35649-244	96906	NUT, HEXAGONAL #4-40		EA	6
4	12	PAHZZ	5310-00-934-9761	MS35649-264	96906	NUT, HEXAGONAL #6 X 32		EA	2
4	13	PAHZZ	5310-00-722-5998	MS15795-805	96906	WASHER, FLAT		EA	2
4	14	PAHZZ	5935-00-051-2071	SM20-20SGDS	95238	CONNECTOR, RECEPTACLE, ELECTRICAL		EA	1
4	15	PAHZZ	5305-00-763-6009	MS24693-C1	96906	SCREW, MACHINE #4-40 X 3/16		EA	1
4	16	PAHZZ	6645-00-770-3742	K19203D2A	82227	METER, TIME TOTALIZING		EA	1
4	17	PAHZZ	5930-00-943-4957	MS75028-22	60418	SWITCH, TOGGLE	CRB	EA	1
4	17	PAHZZ	5930-00-136-1898	11334	14140	SWITCH, ROTARY	CCB	EA	1
4	18	PAHZZ	5305-00-969-6495	MS24693-C25	96906	SCREW, MACHINE #6-32 X 5/16		EA	2
4	19	PAHZZ	5310-00-880-5976	MS15795-806	96906	WASHER, FLAT #6		EA	2
4	20	XDHZZ		3-16-2-128	95987	CLAMP, LOOP		EA	3
4	21	PAHZZ	5950-00-944-4642	C980	09798	TRANSFORMER, POWER		EA	1
4	22	MHHZZ		SMB493462	80063	SPACER: MADE FROM 4710-00-278-3297		EA	2
4	23	PAHZZ	5305-00-054-5652	MS51957-18	96906	SCREW, MACHINE		EA	2
4	24	PAHZZ	5945-00-930-1568	71GB83R4A10K5	98927	RELAY, ARMATURE		EA	1

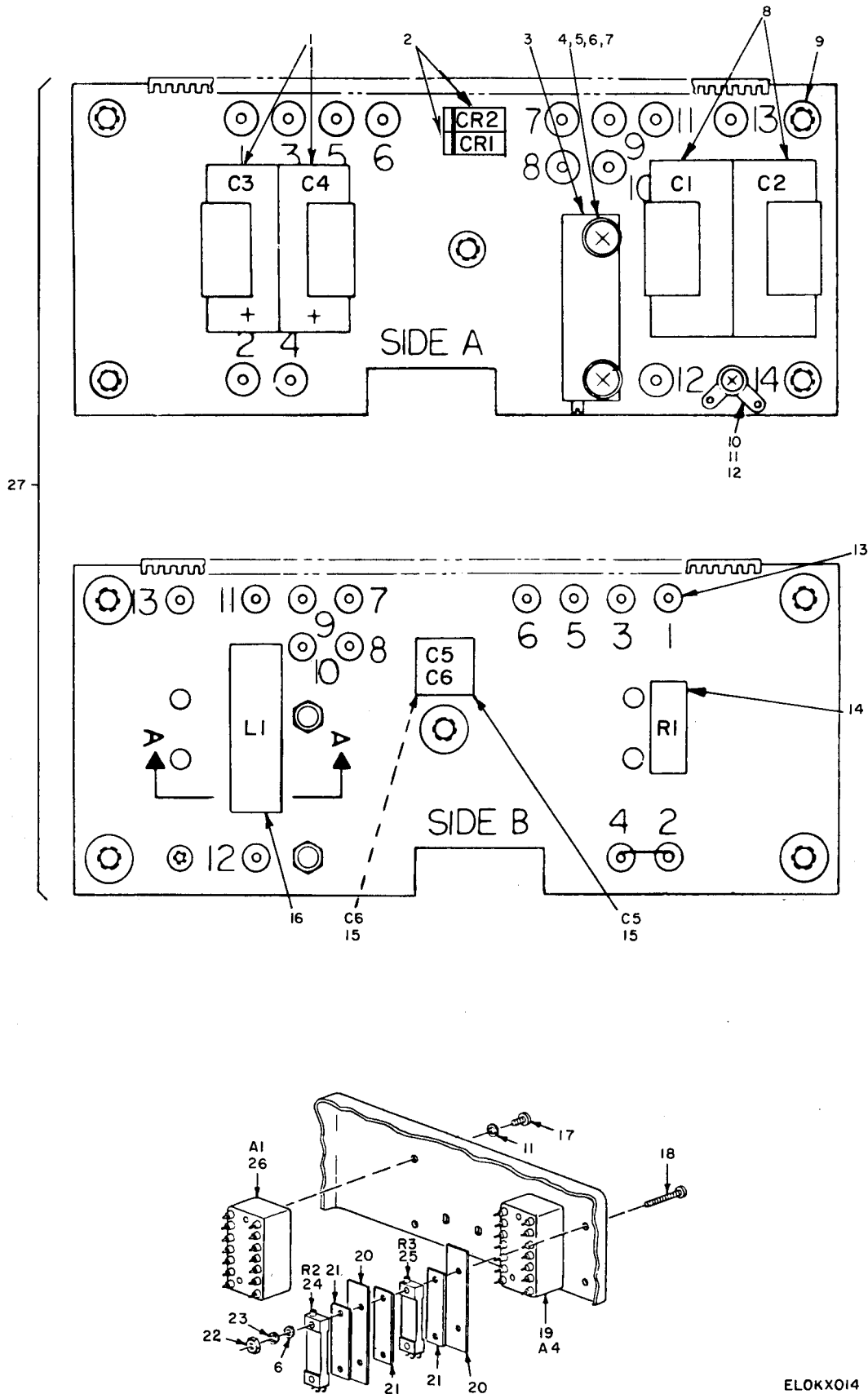
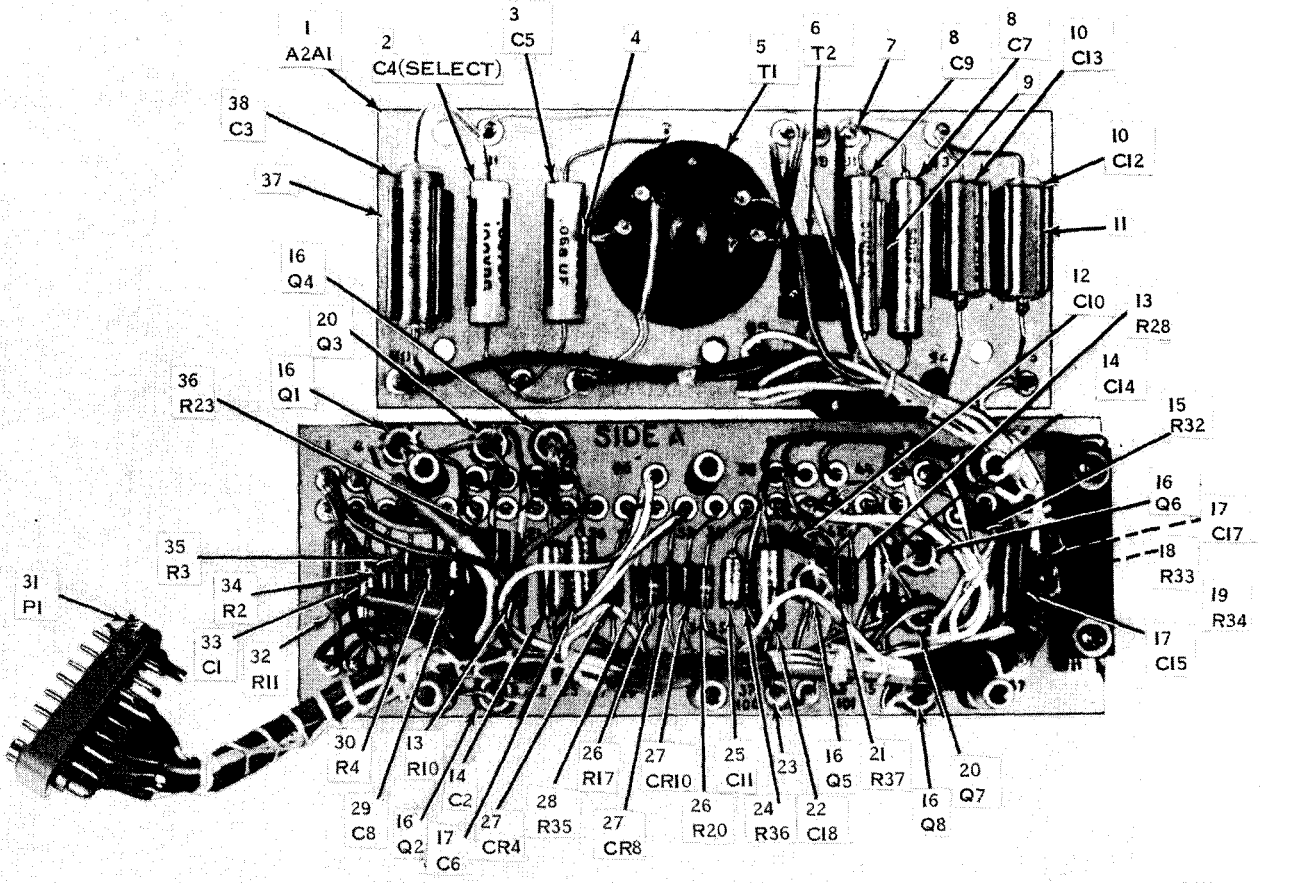


Figure 5. CN-998/ASN-43, CN-998A/ASN-43, and CN-998B/ASN-43 power supply assembly A1, and CN-998B/ASN-43 bias voltage regulator assembly A4.

ELOKX014

SECTION II. REPAIR PARTS LIST (CONTINUED)

(1) ILLUSTRATION		(2) SMR CODE	(3) NATIONAL STOCK NUMBER	(4) PART NUMBER	(5) FSCM	(6) DESCRIPTION	USABLE ON CODE	(7) UNIT OF MEAS	(8) QTY INC IN UNIT
FIG NO.	ITEM NO.								
5	1	XDHZZ		CL65BL560MP3	81349	CAPACITOR, FIXED, ELECTROLYTIC	CRB	EA	2
5	2	PAHZZ	5961-00-087-6047	JALN645	81350	SEMICONDUCTOR	CRB	EA	2
5	3	XDHZZ		2700L101	96791	RESISTOR, VARIABLE	CRB	EA	1
5	4	PAHZZ	5305-00-054-5640	MS51957-6	96906	SCREW, MACHINE	CRB	EA	2
5	5	PAHZZ	5310-00-928-2690	MS35338-77	96906	WASHER, LOCK	CRB	EA	2
5	6	PAHZZ	5310-00-595-6761	MS15795-802	96906	WASHER, FLAT	CRB	EA	2
5	7	XDHZZ		MS35649-24	96906	NUT, HEXAGONAL	CRB	EA	2
5	8	PAHZZ	5910-00-892-7559	CP09AIKE333K3	81349	CAPACITOR, FIXED	CRB	EA	2
5	9	XDHZZ		048-14	56232	NUT, CLINCH	CRB	EA	5
5	10	PAHZZ	5940-00-204-7902	2124-04-00	78189	TERMINAL LUG	CRB	EA	1
5	11	PAHZZ	5310-00-938-8118	MS35338-135	96906	WASHER, LOCK	CRB	EA	1
5	12	PAHZZ	5,06-00-207-5425	MS51937-12	96906	SCREW	CRB	EA	1
5	13	PAHZZ	5940-00-929-5830	PTSM2C4P16	98291	TERMINAL, FEEDTHROUGH	CRB	EA	13
5	14	PAHZZ	5905-00-892-0349	RW59V151	81349	RESISTOR, FIXED, WIREWOUND	CRB	EA	1
5	15	PAHZZ	<del>5910-00-574-3793</del>	R1341-22	96733	CAPACITOR, FIXED	CRB	EA	2
5	16	PAHZZ	5950-00-713-4792	MS91189-38	96906	COIL, RF, FIXED	CRB	EA	1
5	17	PAHZZ	5305-00-054-5646	MS51957-12	96906	SCREW, MACHINE #4-40 X 3/16	CCB	EA	4
5	18	PAHZZ	5305-00-054-5643	MS51957-9	96906	SCREW, MACHINE #2-56 X 3/4	CCB	EA	2
5	19	PAHZZ	6610-00-248-1169	2591281-901	07187	BIAS VOLTAGE REGULATOR A4	CCB	EA	1
5	20	MHHZZ		SMB498765	80063	SPACER: MADE FROM 5970-00-105-3075	CCB	EA	2
5	21	MHHZZ		SMB498764	80063	SPACER: MADE FROM 5970-00-105-3075	CCB	EA	3
5	22	PAHZZ	5310-00-938-2013	MS35649-224	96906	NUT, HEXAGONAL	CCB	EA	2
5	23	PAHZZ	510-00-928-2690	MS35338-77	96906	WASHER, LOCK	CCB	EA	2
5	24	PAHZZ	5905-00-136-4052	1200-808-1	11543	RESISTOR, VARIABLE	CCB	EA	1
5	25	PAHZZ	5905-00-892-6315	224S1-502	80294	RESISTOR, VARIABLE	CCB	EA	1
5	26	PAHZZ	<del>5615-00-400-2708</del>	2591237-901	07187	POWER SUPPLY A1	CCB	EA	1
5	27	PAHHH	6605-00-944-4706	2587134	07187	ELECTRONIC COMPONENTS ASSEMBLY A1	CRB	EA	1



FLK 0015

Figure 6. ① Amplifier, electronic control assembly A2, CN-998/ASN-43 and CN-998A/ASN-43 (sheet 1 of 2).

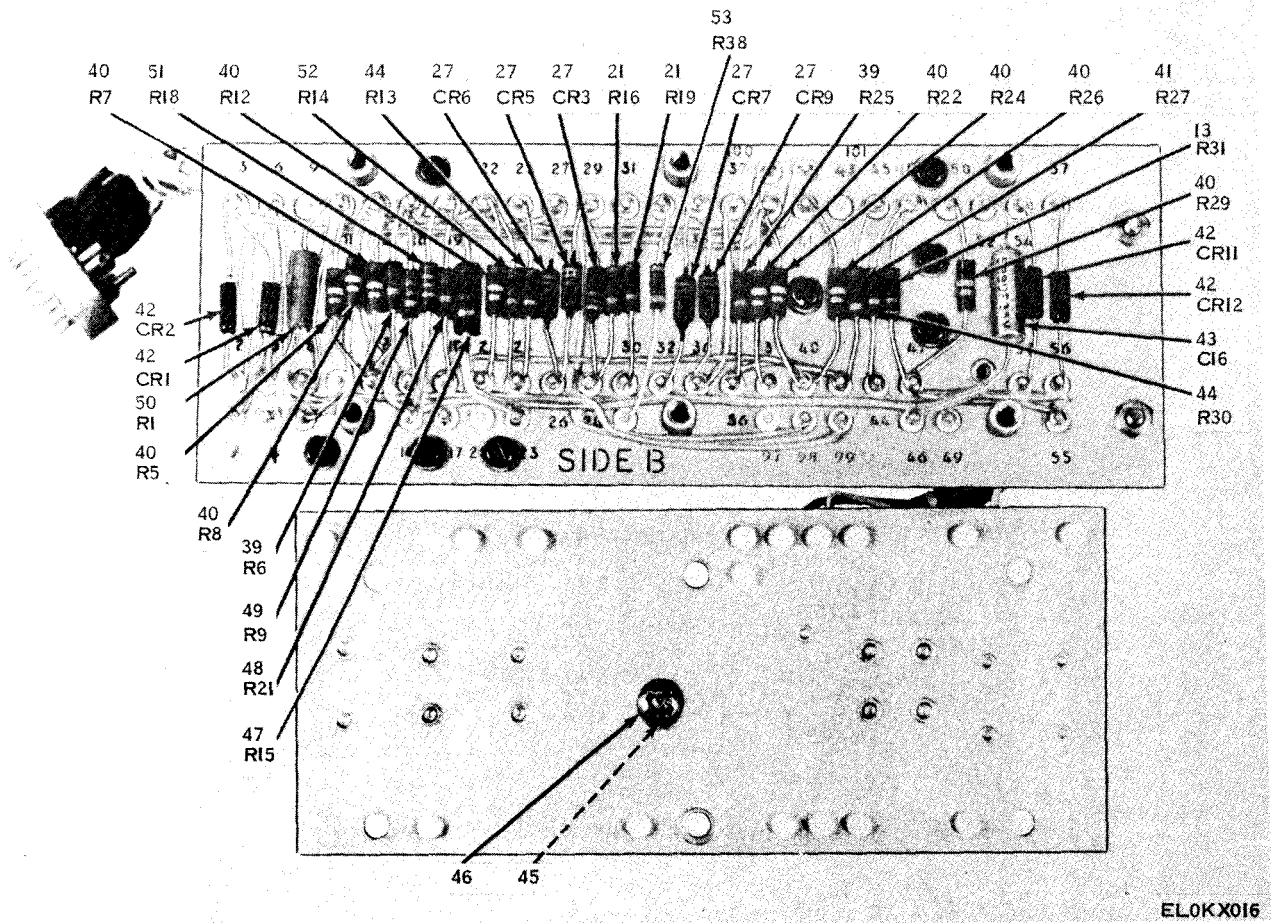


Figure 6. (U) Amplifier, electronic control assembly A2, CN-998/ASN-43 and CN-998A/ASN-43 (sheet 2 of 2).



SECTION II. REPAIR PARTS LIST (CONTINUED)

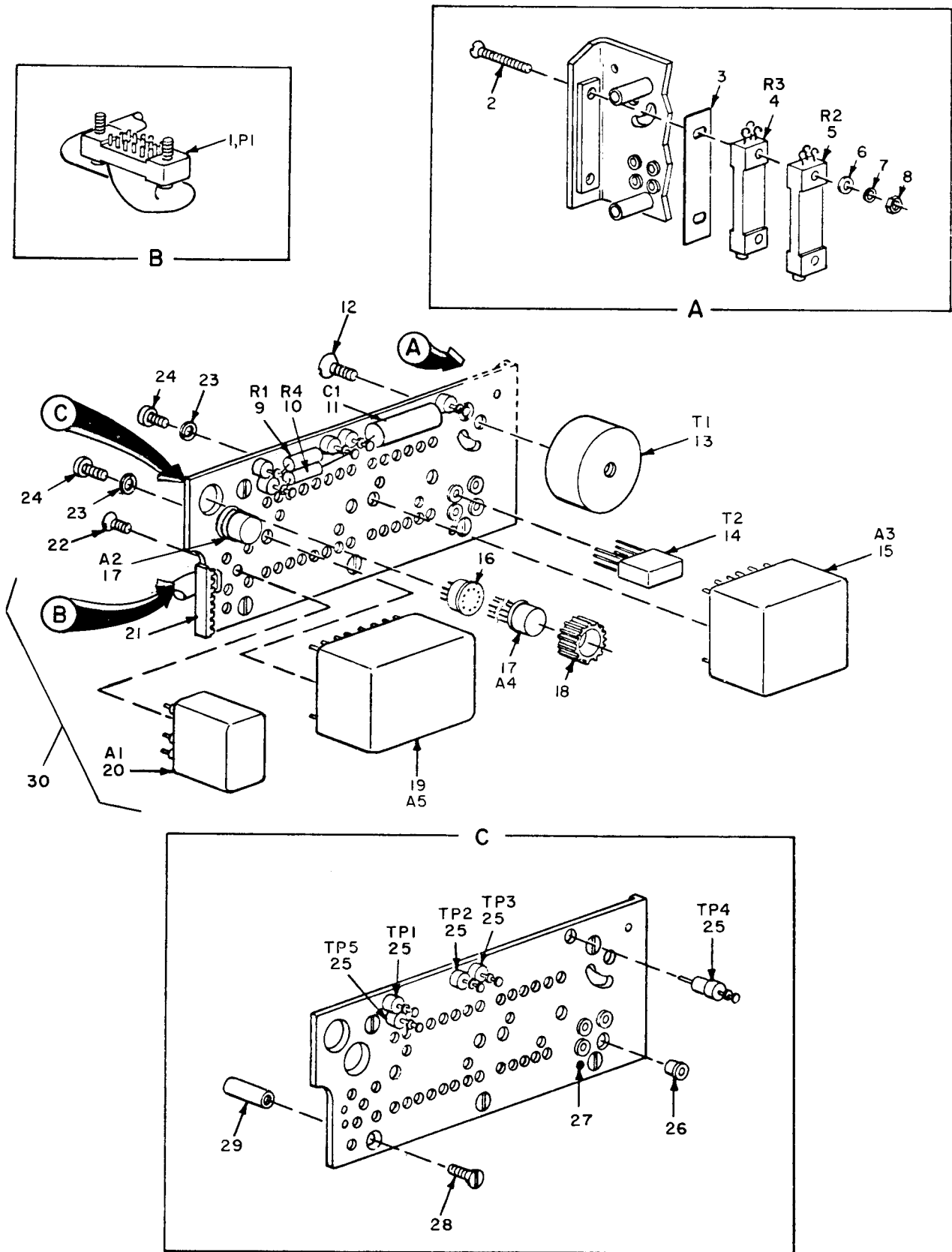
(1) ILLUSTRATION		(2) SMR CODE	(3) NATIONAL STOCK NUMBER	(4) PART NUMBER	(5) FSCM	(6) DESCRIPTION	USABLE ON CODE	(7) UNIT OF MEAS	(8) QTY INC IN UNIT
(A) FIG NO.	(B) ITEM NO.								
6	1	XDHHH		2588596	07187	AMPLIFIER, ELECTRONIC CONTROL A2A1	CRB	EA	1
6	2	PAHZZ	5910-00-835-2728	CTM563VAJ	81349	CAPACITOR, FIXED DIELECTRIC	CRB	EA	1
6	2	XDHZZ		CTM683VAJ	81349	CAPACITOR, FIXED OR DIELECTRIC	CRB	EA	1
6	2	XDHZZ		CTM183VBK	81349	CAPACITOR, FIXED OR DIELECTRIC	CRB	EA	1
6	2	XDHZZ		CTM223VBJ	81349	CAPACITOR, FIXED OR DIELECTRIC	CRB	EA	1
6	2	PAHZZ	5910-00-835-2939	CTM273VBJ	81349	CAPACITOR, FIXED OR DIELECTRIC	CRB	EA	1
6	2	XDHZZ		CTM333VBJ	81349	CAPACITOR, FIXED OR DIELECTRIC	CRB	EA	1
6	2	XDHZZ		CTM393VBK	81349	CAPACITOR, FIXED OR DIELECTRIC	CRB	EA	1
6	2	XDHZZ		CTM473VBJ	81349	CAPACITOR, FIXED OR DIELECTRIC	CRB	EA	1
6	3	XDHZZ		CTM683VAJ	81349	CAPACITOR, FIXED DIELECTRIC	CRB	EA	1
6	4	XDHZZ		100-300-2-1	99378	CLIP, SPRING TENSION	CRB	EA	2
6	5	PAHZZ	5950-00-944-7251	D136	09798	TRANSFORMER, AF	CRB	EA	1
6	6	PAHZZ	5950-00-851-4221	DOT25	80223	TRANSFORMER, AF	CRB	EA	1
6	7	XDHZZ		STSM18C6	98291	TERMINAL STUD	CRB	EA	16
6	8	PAHZZ	5910-00-944-9811	K50AN6KNS	05397	CAPACITOR, FIXED	CRB	EA	2
6	9	XDHZZ		100-300-4A5	99378	CLIP, SPRING TENS	CRB	EA	2
6	10	PAHZZ	5910-00-998-6949	CSR13F226KM	831349	CAPACITOR, FIXED ELECTROLYTIC	CRB	EA	2
6	11	XDHZZ		100-300-5-18	99378	CLIP, SPRING TENSION	CRB	EA	2
6	12	PAHZZ	5910-00-825-8259	E3FR912-5C	13934	CAPACITOR, FIXED, DIELECTRIC	CRB	EA	1
6	13	PAHZZ	5905-00-892-6944	RC07GF101J	81349	RESISTOR, FIXED COMPOSITION	CRB	EA	3
6	14	PAHZZ	5910-00-105-1976	CSR13C396KM	81349	CAPACITOR, FIXED ELECTROLYTIC	CRB	EA	2
6	15	PAHZZ	5905-00-975-1135	RW59V821	81349	RESISTOR, FIXED, WIREWOUND	CRB	EA	1
6	16	PAHZZ	5961-00-787-5305	JAN2N718A	81349	TRANSISTOR	CRB	EA	6
6	17	PAHZZ	5910-00-018-1418	CSR13F685KM	81349	CAPACITOR, FIXED ELECTROLYTIC	CRB	EA	3
6	18	PAHZZ	5905-00-814-3981	224S1-202	80294	RESISTOR, VARIABLE	CRB	EA	1
6	19	PAHZZ	5905-00-687-1558	224S1-503	80294	RESISTOR, VARIABLE	CRB	EA	1
6	20	XDHZZ		2N2907A	07263	TRANSISTOR	CRB	EA	2
6	21	PAHZZ	5905-00-682-4100	RC07GF622J	81349	RESISTOR, FIXED COMPOSITION	CRB	EA	3
6	22	PAHZZ	5910-00-997-4079	CSR13D226KM	81349	CAPACITOR, FIXED ELECTROLYTIC	CRB	EA	1
6	23	XDHZZ		FTSM28P16	98291	TERMINAL	CRB	EA	62
6	24	PAHZZ	5905-00-681-8818	RC07GF153J	81349	RESISTOR, FIXED COMPOSITION	CRB	EA	1
6	25	PAHZZ	5910-00-882-3174	CSR13E155KM	81349	CAPACITOR, FIXED ELECTROLYTIC	CRB	EA	1
6	26	PAHZZ	5905-00-686-3129	RC07GF104J	81349	RESISTOR, FIXED COMPOSITION	CRB	EA	2
6	27	PAHZZ	5961-00-884-1620	SG1172	99180	SEMICONDUCTOR	CRB	EA	8
6	28	PAHZZ	5905-00-110-7620	RCR07G102JS	81349	RESISTOR, FIXED COMPOSITION ASSEMBLY A2 SERIAL NO. 1 THRU 331	CRB	EA	1
6	28	PAHZZ	5905-00-228-5506	RCR07G622JS	81349	RESISTOR, FIXED COMPOSITION SERIAL NO. 332 AND UP	CRB	EA	1
6	28	PAHZZ	5905-00-114-0711	RCR07G472JS	81349	RESISTOR, FIXED COMPOSITION ASSEMBLY A2 SERIAL NO. 1A AND UP	CRB	EA	1
6	29	PAHZZ	5910-00-932-4455	CSR13E156KM	81349	CAPACITOR, FIXED ELECTROLYTIC	CRB	EA	1
6	30	PAHZZ	5905-00-192-3488	RN60D9092F	81349	RESISTOR, FIXED FILM	CRB	EA	1
6	31	PAHZZ	5935-00-912-9368	SM20-20PSLGD	95238	CONNECTOR, PLUG ELECTRICAL	CRB	EA	1
6	32	PAHZZ	5905-00-975-1127	RW59V122	81349	RESISTOR, FIXED, WIREWOUND	CRB	EA	1

SECTION II. REPAIR PARTS LIST (CONTINUED)

(1) ILLUSTRATION		(2) SMR CODE	(3) NATIONAL STOCK NUMBER	(4) PART NUMBER	(5) FSCM	(6) DESCRIPTION	USABLE ON CODE	(7) UNIT OF MEAS	(8) QTY INC IN UNIT
(A) FIG NO.	(B) ITEM NO.								
6	33	YDZZ		SMC545682	80063	CAPACITOR, FIXED	CRB	EA	1
6	34	PAZZ	5905-00-983-6914	RN60D1002F	81349	RESISTOR, FIXED FILM	CRB	EA	1
6	35	PAZZ	5905-00-062-0152	RN60D8252F	81349	RESISTOR, FIXED FILM	CRB	EA	1
6	36	PAZZ	5905-00-121-9861	RCR32G102JS	81349	RESISTOR, FIXED COMPOSITION	CRB	EA	1
6	37	YDZZ		6005-15CC	91506	CLIP, SPRING TENSION	CRB	EA	1
6	38	PAZZ	5910-00-849-0697	CP09ALKB393K3	81349	CAPACITOR, FIXED PAPER	CRB	EA	1
6	39	PAZZ	5905-00-111-4727	RCR07G272JS	81349	RESISTOR, FIXED COMPOSITION	CRB	EA	2
6	40	PAZZ	5905-00-106-3666	RCR07G103JS	81349	RESISTOR, FIXED COMPOSITION	CRB	EA	8
6	41	PAZZ	5905-00-110-7620	RCR07G102JS	81349	RESISTOR, FIXED COMPOSITION	CRB	EA	1
6	42	PAZZ	5961-00-087-6047	JAN1N645	81349	SEMICONDUCTOR	CRB	EA	4
6	43	PAZZ	5910-00-018-1418	CSR13F685KM	81349	CAPACITOR, FIXED ELECTROLYTIC	CRB	EA	1
6	43	PAZZ	5910-00-105-1977	CSR13G335KM	81349	CAPACITOR OR	CRB	EA	1
6	44	PAZZ	5905-00-141-1132	RCR07G752JS	81349	RESISTOR, FIXED COMPOSITION	CRB	EA	2
6	45	PAZZ	5310-00-928-2690	MC35338-77	96906	WASHER, LOCK	CRB	EA	1
6	46	PAZZ	5305-00-054-5643	MS51957-9	96906	SCREW, MACHINE	CRB	EA	1
6	47	PAZZ	5905-00-141-1116	RCR20G562JS	81349	RESISTOR, FIXED COMPOSITION	CRB	EA	1
6	48	PAZZ	5905-00-141-0743	RCR07G392JS	81349	RESISTOR, FIXED COMPOSITION	CRB	EA	1
6	49	PAZZ	5905-00-116-2394	RCR07G511JS	81349	RESISTOR, FIXED COMPOSITION	CRB	EA	1
6	50	PAZZ	5905-00-067-3249	RN60D4222F	81349	RESISTOR, FIXED FILM	CRB	EA	1
6	51	PAZZ	5950-00-104-8365	RCR07G133JS	81349	RESISTOR, FIXED COMPOSITION	CRB	EA	1
6	52	PAZZ	5905-00-111-4750	RCR07G301JS	81349	RESISTOR, FIXED COMPOSITION	CRB	EA	1
6	53	PAZZ	5905-00-681-8818	RC07GF153J	81349	RESISTOR, FIXED COMPOSITION SERIAL NO. 1A AND UP	CRB	EA	1







ELOKX017

Figure 7. Amplifier, electronic control assembly A2, CN-998B/ASN-43.

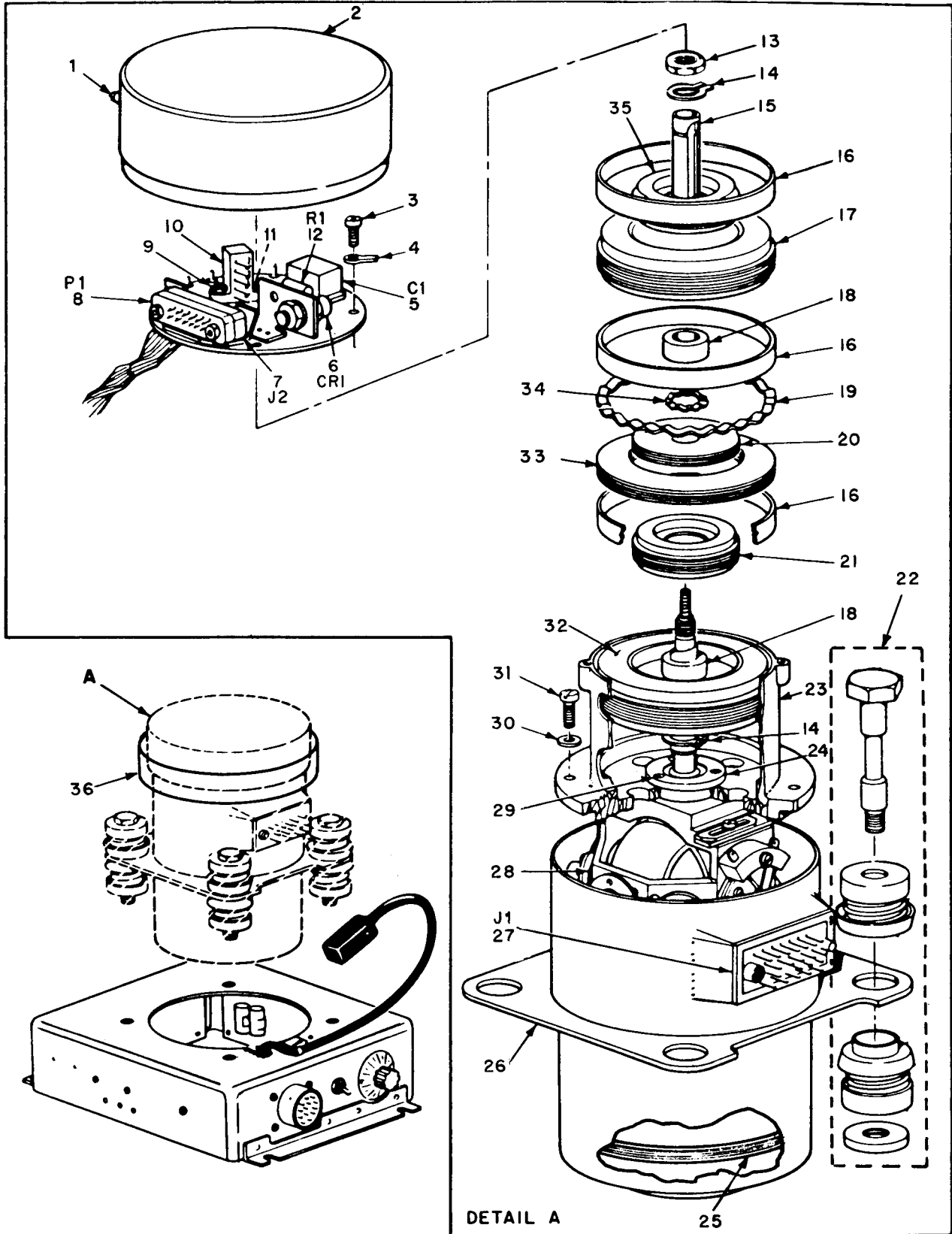
SECTION II. REPAIR PARTS LIST (CONTINUED)

(1) ILLUSTRATION		(2) SYMBOL CODE	(3) NATIONAL STOCK NUMBER	(4) PART NUMBER	(5) FSCM	(6) DESCRIPTION	USABLE ON CODE	(7) UNIT OF MEAS	(8) QTY INC IN UNIT
(A) FIG NO.	(B) ITEM NO.								
7	1	XDHZZ		SM20-20PGDSL	95238	CONNECTOR, PLUG ELECTRICAL	CCB	EA	1
7	2	PAHZZ	5305-00-054-5647	MS51957-13	96906	SCREW, MACHINE	CCB	EA	6
7	3	MHHZZ		SMB498777	80063	SPACER: MADE FROM 5970-00-105-3075	CCB	EA	1
7	4	PAHZZ	5905-00-814-3981	224S1-202	80294	RESISTOR VARIABLE	CCB	EA	1
7	5	PAHZZ	5905-00-687-1558	224S1-503	80294	RESISTOR VARIABLE	CCB	EA	1
7	6	PAHZZ	5310-00-595-6761	MS15795-802	96906	WASHER FLAT	CCB	EA	2
7	7	PAHZZ	5310-00-187-2429	MS35338-134	96906	WASHER LOCK	CCB	EA	2
7	8	PAHZZ	5310-00-938-2013	MS35649-224	96906	NUT PLAIN HEXAGON	CCB	EA	2
7	9	PAHZZ	5905-00-984-1468	RN60D2670F	81349	RESISTOR FIXED FILM	CCB	EA	2
7	9	PAHZZ	5905-00-069-3913	RN60D2740F	81349	RESISTOR FIXED FILM	CCB	EA	1
7	9	PAHZZ	5905-00-763-6502	RN60D2800F	81349	RESISTOR FIXED FILM	CCB	EA	1
7	9	PAHZZ	5905-00-763-5329	RN60D2870F	81349	RESISTOR FIXED FILM	CCB	EA	1
7	9	PAHZZ	5905-00-900-2755	RN60D2940F	81349	RESISTOR FIXED FILM	CCB	EA	1
7	9	PAHZZ	5905-00-052-7853	RN60D3090F	81349	RESISTOR FIXED FILM	CCB	EA	1
7	9	PAHZZ	5905-00-952-6823	RN60D3160F	81349	RESISTOR FIXED FILM	CCB	EA	1
7	9	PAHZZ	5905-00-770-5885	RN60D3240F	81349	RESISTOR FIXED FILM	CCB	EA	1
7	9	PAHZZ	5905-00-969-5850	RN60D3320F	81349	RESISTOR FIXED FILM	CCB	EA	1
7	9	XDHZZ		RN60D3310F	81349	RESISTOR FIXED FILM	CCB	EA	1
7	10	PAHZZ	5905-00-988-2310	RN60D1000F	81349	RESISTOR FIXED FILM	CCB	EA	1
7	11	PAHZZ	5910-00-835-2934	CTM183VBJ	81349	CAPACITOR FIXED DIELECTRIC	CCB	EA	1
7	11	XDHZZ		CTM223VBJ	81349	CAPACITOR FIXED DIELECTRIC	CCB	EA	1
7	11	PAHZZ	5910-00-835-2939	CTM273VBJ	81349	CAPACITOR FIXED DIELECTRIC	CCB	EA	1
7	11	XDHZZ		CTM333VBJ	81349	CAPACITOR FIXED DIELECTRIC	CCB	EA	1
7	11	PAHZZ	5910-00-835-2943	CTM393VBJ	81349	CAPACITOR FIXED DIELECTRIC	CCB	EA	1
7	11	XDHZZ		CTM473VBJ	81349	CAPACITOR FIXED DIELECTRIC	CCB	EA	1
7	11	PAHZZ	5910-00-835-2728	CTM563VAJ	81349	CAPACITOR FIXED DIELECTRIC	CCB	EA	1
7	11	XDHZZ		CTM683VJB	81349	CAPACITOR FIXED DIELECTRIC	CCB	EA	1
7	12	PAHZZ	5303-00-969-6495	MS24693C25	96906	SCREW MACHINE	CCB	EA	1
7	13	PAHZZ	5950-00-136-6996	M5504	00348	TRANSFORMER, AUDIOFREQUENCY	CCB	EA	1
7	14	PAHZZ	5950-00-136-7014	D400	09798	TRANSFORMER, AUDIOFREQUENCY	CCB	EA	1
7	15	XDHZZ		2591270-901	07187	DEMODULATOR MODULATOR ASSEMBLY	CCB	EA	1
7	16	XDHZZ		X8058-34G1R5	91506	SOCKET	CCB	EA	2
7	17	PAHZZ	6615-00-400-2704	WS8114T	97942	AMPLIFIER	CCB	EA	2
7	18	XDHZZ		3AL669-2R	18915	HEAT SINK	CCB	EA	1
7	19	PAHZZ	6615-00-400-2708	2591237-901	07187	POWER SUPPLY ASSEMBLY	CCB	EA	1
7	20	PAHZZ	5915-00-420-9169	2591295-901	07187	NETWORK, IMPEDANCE MATCHING	CCB	EA	1
7	21	XDHZZ		G51H-A-BLK	03296	GROMMET	CCB	EA	1
7	22	PAHZZ	5305-00-777-6039	MS51959-12	96906	SCREW, MACHINE	CCB	EA	2
7	23	PAHZZ	5310-00-933-8118	MS35338-135	96906	WASHER, LOCK	CCB	EA	4
7	24	PAHZZ	5305-00-054-5646	MS51957-12	96906	SCREW, MACHINE	CCB	EA	2
7	25	PAHZZ	5940-00-706-8090	FT039B01	81349	TERMINAL, FEEDTHROUGH, INSULATED	CCB	EA	5
7	26	PAHZZ	5940-00-463-7270	FTE12	98291	TERMINAL, FEEDTHROUGH, INSULATED	CCB	EA	4

SECTION II. REPAIR PARTS LIST (CONTINUED)

(1) ILLUSTRATION		(2) SMR CODE	(3) NATIONAL STOCK NUMBER	(4) PART NUMBER	(5) FSCM	(6) DESCRIPTION	USABLE ON CODE	(7) UNIT OF MEAS	(8) QTY INC IN UNIT
(A) FIG NO.	(B) ITEM NO.								
7	27	PAHZZ	5940-00-197-6661	3393-2-03	71279	TERMINAL, STUD	CCB	EA	1
7	28	PAHZZ	5305-00-770-2533	MS35249-20	96906	SCREW, MACHINE	CCB	EA	1
7	29	XDHZZ		SMB498790	80063	POST	CCB	EA	6
7	30	PAHHD	6615-00-400-2705	2592754-901	07187	AMPLIFIER, ELECTRONIC CONTROL ASSEMBLY	CCB	EA	1





ELOKX018

Figure 8. Gyroscope subassembly A3.

SECTION II. REPAIR PARTS LIST (CONTINUED)

(1) ILLUSTRATION		(2) SMR CODE	(3) NATIONAL STOCK NUMBER	(4) PART NUMBER	(5) FSCM	(6) DESCRIPTION	(7) UNIT OF MEAS	(8) QTY INC IN UNIT
(A) FIG NO.	(B) ITEM NO.					USABLE ON CODE		
						GROUP: 0302 GYRO SECTION		
8	1	XDDZZ		871929	07187	TUBE ASSEMBLY, METAL	EA	1
8	2	XDDZZ		2581105	07187	COVER, GYRO	EA	1
8	3	PADZZ	5303-00-054-5637	MS51957-3	96906	SCREW, MACHINE	EA	4
8	4	XDDZZ		718	78452	TERMINAL LUG	EA	1
8	5	XDDZZ		DE6-124D	99515	CAPACITOR, FIXED	EA	1
8	6	XDDZZ		JANIN2986B	81350	DIODE, SEMICONDUCTOR	EA	2
8	7	PADZZ	5935-00-807-0265	SM26-20PGDY	95238	CONNECTOR, ELECTRICAL	EA	1
8	8	XDDZZ		SM26-20SGDY	95238	CONNECTOR, ELECTRICAL	EA	1
8	9	XDDZZ		2554284-1	07187	NUT, HEXAGONAL	EA	2
8	10	PADZZ	5977-00-794-1636	AC259-10	99932	CONTACT ASSEMBLY	EA	1
8	11	XDDZZ		2518269	07187	SHIM	EA	V
8	12	XDDZZ		1343P	07088	RESISTOR, FIXED, WIREWOUND	EA	1
8	13	XDDZZ		2555544	07187	NUT, HEXAGONAL	EA	1
8	14	PADZZ	5365-00-715-1152	MS16624-2037	96906	RING, RETAINING	EA	2
8	15	XDDZZ		2518374	07187	SHAFT, SLEEVE	EA	1
8	16	XDDZZ		2553902	07187	SPACER, SLEEVE	EA	3
8	17	XDDZZ		2975004	90012	SYNCHRO, TRANSMITTER STATOR	EA	1
8	18	XDDZZ		2518445	07187	SPACER	EA	2
8	19	XDDZZ		233963	07187	SPACER, SPRING	EA	4
8	20	XDDZZ		2553903	07187	SHIELD	EA	1
8	21	XDDZZ		20D1071-2	90012	SYNCHRO, ROTOR	EA	1
8	22	XDOZZ		90950-8	13636	MOUNT, RESILIENT	EA	4
8	23	XDDZZ		2579008	07187	HOUSING, ELECTRICAL EQUIPMENT	EA	1
8	24	XDDZZ		Z96SSW6V0-11	70854	BEARING, BALL	EA	1
8	25	XDDZZ		664201	07187	CAGE ASSEMBLY	EA	1
8	26	XDDZZ		SMC545530	80063	HOUSING, ELECTRICAL EQUIPMENT (CN-998/ASN-43)	EA	1
8	26	XDDZZ		2590218	07187	HOUSING, ELECTRICAL EQUIPMENT (CN-998A/ASN-43 AND CN-998B/ASN-43)	EA	1
8	27	XDDZZ		UH26-20PS	95328	CONNECTOR, PLUG, ELECTRICAL	EA	1
8	28	XDDDL		SMD545429	80063	GIMBAL, GYROSCOPE ASSEMBLY (CN-998/ASN-43)	EA	1
8	29	XDDDL		SMD493409	80063	GIMBAL, GYROSCOPE ASSEMBLY (CN-998A/ASN-43 AND CN-998B/ASN-43)	EA	1
8	29	PADZZ	5303-00-054-5636	MS51957-2	96906	SCREW, MACHINE	EA	3
8	30	PADZZ	5310-00-928-2690	MS35338-77	96906	WASHER, LOCK	EA	4
8	31	PADZZ	5305-00-054-5647	MS51957-13	96906	SCREW, MACHINE	EA	4
8	32	XDDZZ		20D1072-2	90012	SYNCHRO, TRANSMITTER STATOR	EA	1
8	33	XDDZZ		2553904	07187	SHIELD, COIL	EA	1
8	34	XDDZZ		233745	07187	WASHER, SPRING	EA	10
8	35	XDDZZ		2975003	90012	SYNCHRO, TRANSMITTER ROTOR	EA	1
8	36	PADZZ	6615-00-890-3937	875863	07187	TEAR BAND	EA	1

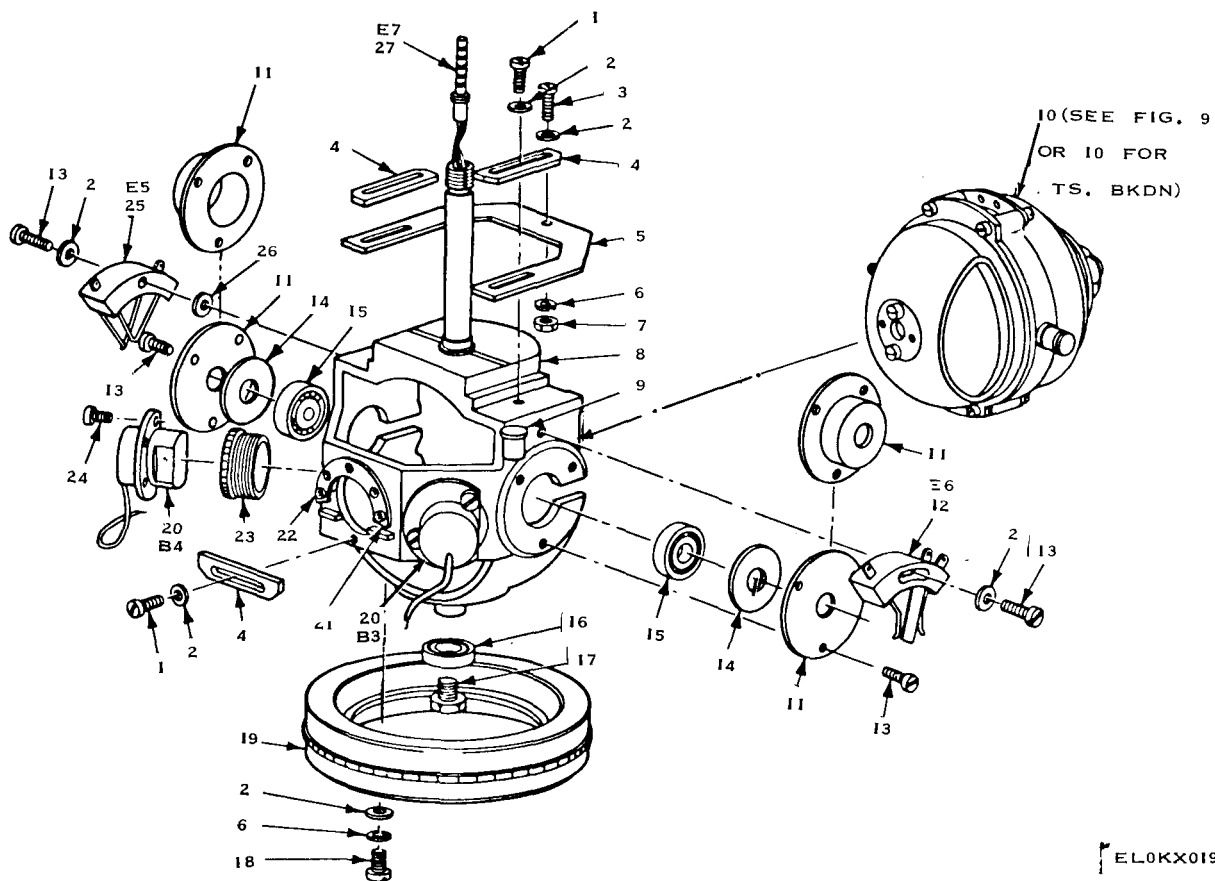
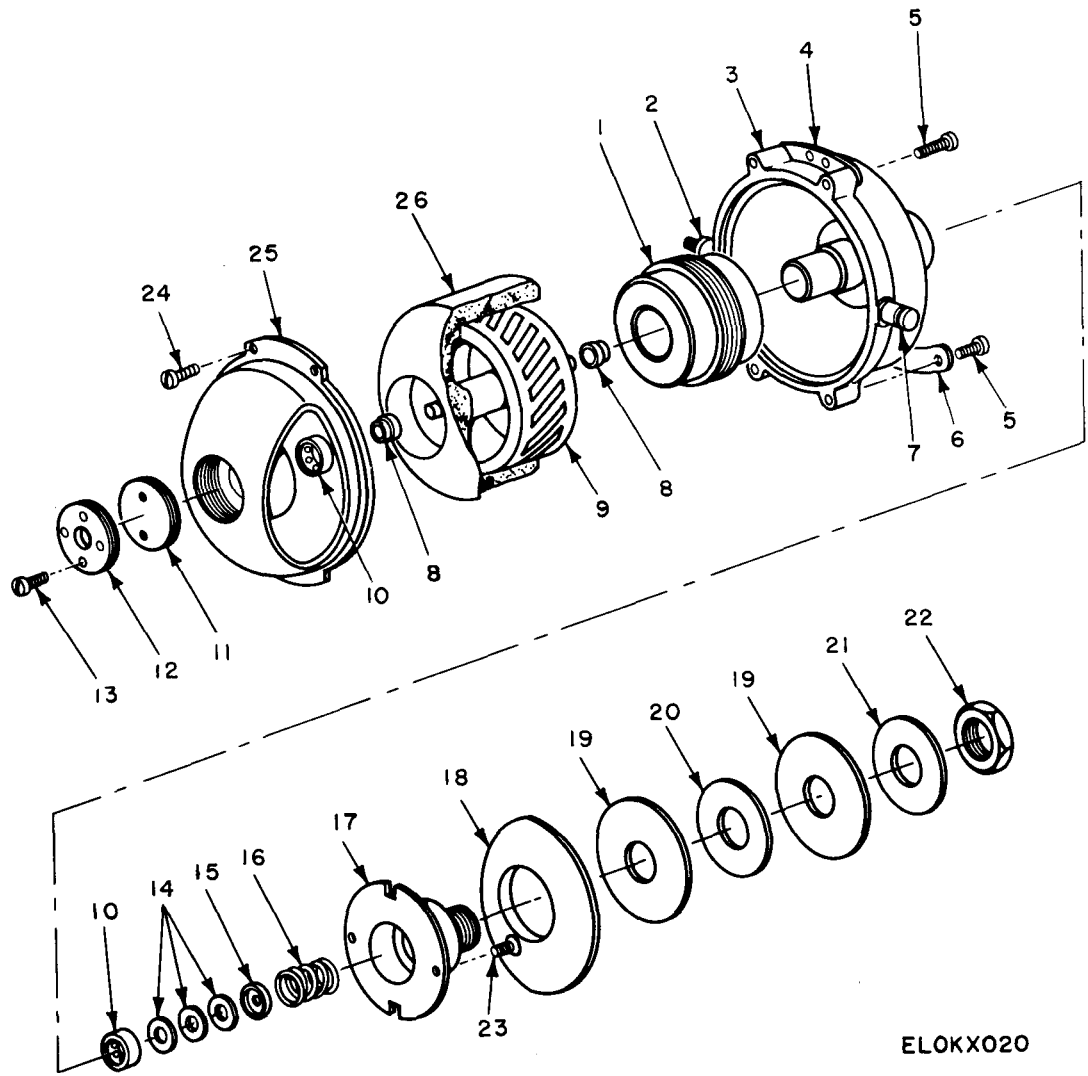


Figure 9. Gimbal assembly, CN-998/ASN-43, CN-998A/ASN-43, and CN-998B/ASN-43.



SECTION II. REPAIR PARTS LIST (CONTINUED)

(1) ILLUSTRATION		(2) SMR CODE	(3) NATIONAL STOCK NUMBER	(4) PART NUMBER	(5) FSCM	(6) DESCRIPTION	USABLE ON CODE	(7) UNIT OF MEAS	(8) QTY INC IN UNIT
(A) FIG NO.	(B) ITEM NO.								
9	1	PADZZ	5305-00-057-0498	MS35234-2	96906	SCREW, MACHINE, RND HEAD #2-64 X 3/16 IN.		EA	3
9	1	PADZZ	5305-00-057-0499	MS35234-3	96906	SCREW, MACHINE, RND HEAD #2-64 X 1/4 IN.		EA	3
9	2	PADZZ	5310-00-595-6761	MS15795-802	96906	WASHER, FLAT #2		EA	8
9	3	PADZZ	5305-00-054-5637	MS51957-3	96906	SCREW, MACHINE, RND HEAD #2 X 56 X 1/4		EA	1
9	3	PADZZ	5305-00-054-5638	MS35233-4	96906	SCREW, MACHINE, RND HEAD #2 X 56 X 5/16		EA	1
9	4	XDDZZ		199353	56232	WEIGHT, BALANCE		EA	3
9	4	XDDZZ		265640	07187	WEIGHT, BALANCE		EA	4
9	5	XDDZZ		2556704	07187	BRACKET, BALANCE WEIGHT		EA	1
9	6	XDDZZ		MS98834-134	96906	WASHER, LOCK, SPLIT #2		EA	3
9	7	XDDZZ		MS93649-224	96906	NUT, HEX #2 X 56		EA	1
9	8	XDDZZ		2585883	07187	GIMBAL RING		EA	1
9	9	XDDZZ		1N472	99942	DIODE, SEMICONDUCTOR, A3CR2		EA	1
9	10	XDDDL		SMD545493	80063	GYRO ASSEMBLY (CN-998/ASN-43)		EA	1
9	10	XDDDL		SMD493419	80063	GYRO ASSEMBLY (CN-998A/ASN-43 AND CN-998B/ASN-43)		EA	1
9	11	XDDZZ		SMB545437	80063	RETAINER, BEARING (CN-998/ASN-43)		EA	2
9	11	XDDZZ		2519756	07187	RETAINER, BEARING (CN-998A/ASN-43 AND CN-998B/ASN-43)		EA	2
9	12	XDDZZ		17850	07187	BRUSH ASSY, ELECTRICAL CONTACT (CN-998/ASN-43)		EA	1
9	12	XDDZZ		SMC493417	80063	BRUSH ASSY, ELECTRICAL CONTACT (CN-998A/ASN-43 AND CN-998B/ASN-43)		EA	1
9	13	PADZZ	5305-00-057-0500	MS351958-4	96906	SCREW, MACHINE, #2-64 X 3/8 IN.		EA	8
9	14	XDDZZ		244829	07189	SHIM, BEARING		EA	3
9	14	XDDZZ		244698	07187	SHIM, BEARING		EA	3
9	14	XDDZZ		244699	07187	SHIM, BEARING		EA	3
9	15	XDDZZ		R3SSW5VCA00-11	70854	BEARING, BALL		EA	2
9	15	PADZZ	3110-00-686-1054	R3SSW5VCB00-11	70854	BEARING, BALL		EA	2
9	15	XDDZZ		R3SSW5VCC00-11	70854	BEARING, BALL		EA	2
9	15	XDDZZ		R3SSW5VDC00-11	70854	BEARING, BALL		EA	2
9	16	XDDZZ		2930324	43334	BEARING, BALL		EA	1
9	17	XDDZZ		2518191	07187	SCREW, SPECIAL		EA	1
9	18	XDDZZ		SMB545434-7	80063	SCREW, MACHINE, RND HEAD #2-64 X 5/32 IN.		EA	2
9	19	XDDZZ		662899	07187	STATOR, TORQUE MOTOR		EA	1
9	20	XDDZZ		2555916-1	07187	COIL, MATCHED SET (A3B3 AND A3B4)		EA	1
9	21	XDDZZ		267396	07187	TERMINAL BOARD ASSEMBLY A3E8		EA	1
9	22	XDDZZ		SMB545434-2	80063	SCREW, MACHINE, RND HEAD #0-80 X 3/16		EA	2
9	23	XDDZZ		2555914	07187	COIL SEAT		EA	1
9	24	XDDZZ		SMB545434-4	80063	SCREW, MACHINE, END HEAD #0-80 X 9/32		EA	10
9	25	XDDZZ		300225	99417	BRUSH ASSY, ELECTRICAL CONTACT A3E5		EA	1
9	26	PADZZ	5310-00-595-6761	MS15795-802	96906	WASHER, FLAT #2 (CN-998A/ASN-43 AND CN-998B/ASN-43)		EA	1
9	27	XDDZZ		SR60-1022-1	11112	SLIP RING ASSEMBLY A3E7		EA	1



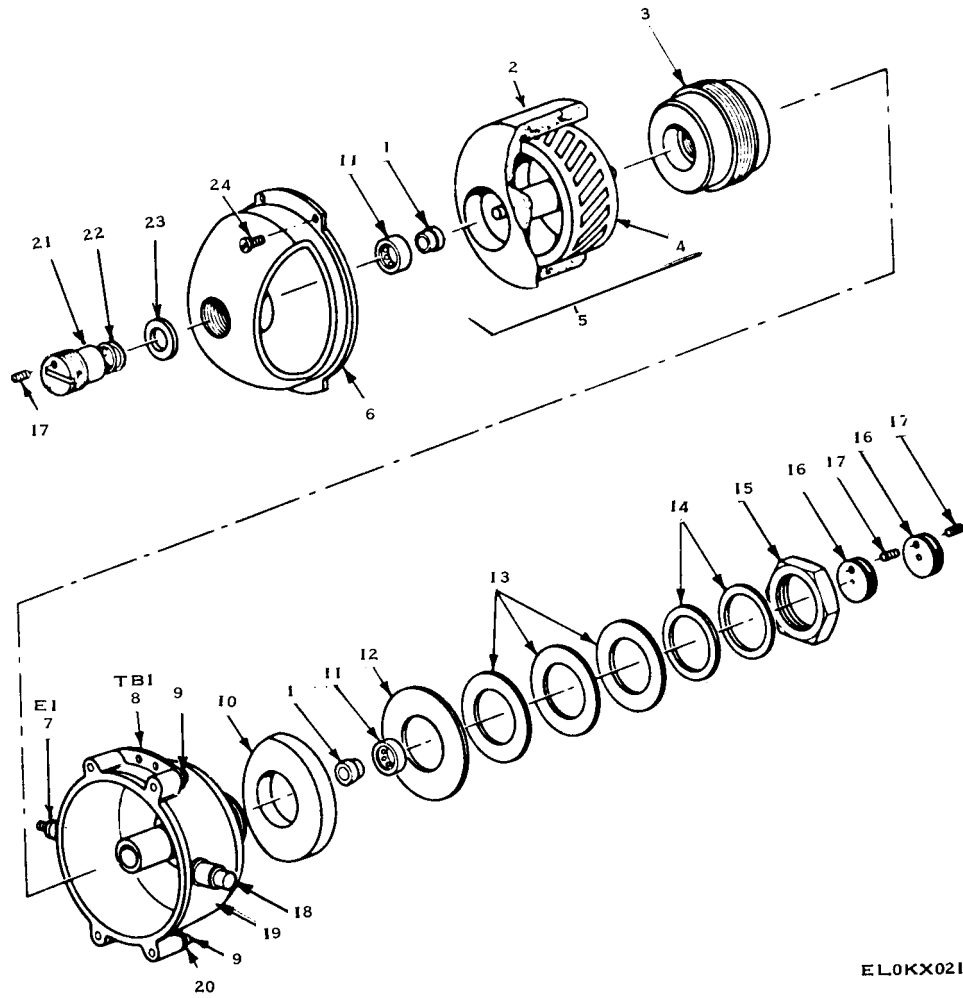
ELOKX020

Figure 10. Gyro assembly, CN-998/ASN-43.

## SECTION II . REPAIR PARTS LIST (CONTINUED)

TM11-6605-202-24P

(1) ILLUSTRATION		(2) SMR CODE	(3) NATIONAL STOCK NUMBER	(4) PART NUMBER	(5) FSCM	(6) DESCRIPTION	USABLE ON CODE	(7) UNIT OF MEAS	(8) QTY INC IN UNIT
(A) FIG NO.	(B) ITEM NO.								
10	1	XDDZZ		SMD545474	80063	GYRO STATOR		EA	1
10	2	XDDZZ		SMC545471	80063	RING, ELECTRICAL CONTACT		EA	1
10	3	XDDZZ		SMD545470	80063	END BELL		EA	1
10	4	XDDZZ		SMB545387	80063	TERMINAL BOARD ASSEMBLY		EA	1
10	5	PADZZ	5305-00-145-7004	AN501-1-2	88044	SCREW, MACHINE #1-72 X 1/8"		EA	4
10	6	XDDZZ		2553266	07187	TERMINAL BOARD ASSEMBLY		EA	1
10	7	XDDZZ		SMB545472	80063	RING, CONTACT ELECTRICAL		EA	1
10	8	PADZZ	3110-00-828-7683	282741	56232	INNER RACE AND BALL ASSEMBLY		EA	1
10	9	XDDZZ		SMC545469	80063	MOTOR, ROTOR		EA	1
10	10	PADZZ	3310-00-227-3191	282740	56232	BEARING, BALL		EA	1
10	11	XDDZZ		SMB545484	80063	NUT, CALIBRATION		EA	1
10	12	XDDZZ		SMB545483	80063	WEIGHT, CALIBRATION		EA	1
10	13	XDDZZ		SMB545434-1	80063	SCREW, MACHINE #0-80 X 5/32		EA	2
10	14	XDDZZ		SMB545479-2	80063	SHIM, BEARING		EA	V
10	15	XDDZZ		SMB545479-1	80063	SHIM, BEARING		EA	V
10	16	XDDZZ		SMB545481	80063	RETAINER		EA	1
10	16	XDDZZ		SMB545489	80063	SPRING HELICAL		EA	1
10	17	XDDZZ		SMC545490	80063	CAP		EA	1
10	18	XDDZZ		SMB545487-1	80063	WEIGHT		EA	1
10	18	XDDZZ		SMB545487-2	80063	OR WEIGHT		EA	1
10	19	XDDZZ		SMB545486	80063	WASHER		EA	V
10	20	XDDZZ		SMB545485	80063	PLATE		EA	V
10	20	XDDZZ		SMB545480	80063	PLATE		EA	V
10	21	XDDZZ		SMB545482	80063	SHIM		EA	V
10	22	XDDZZ		SMB545478	80063	NUT, HEXAGONAL		EA	1
10	23	PADZZ	5305-00-145-6948	AN501-0-2	88044	SCREW, MACHINE #0-80 X 1/8		EA	2
10	24	XDDZZ		SMB545434-6	80063	SCREW, MACHINE #1-72 X 5/32		EA	4
10	25	XDDZZ		SMD545492	80063	HOUSING, GYRO		EA	1
10	26	XDDZZ		SMD545477	80063	GYRO ROTOR ASSEMBLY		EA	1



E.LOKX021

Figure 11. Gyro assembly, CN-998A/ASN-43 and CN-988B/ASN-43

## SECTION II. REPAIR PARTS LIST (CONTINUED)

TM11-6605-202-24P

(1) ILLUSTRATION		(2) SYR CODE	(3) NATIONAL STOCK NUMBER	(4) PART NUMBER	(5) FSCM	(6) DESCRIPTION	(7) UNIT OF MEAS	(8) QTY INC IN UNIT
(A) FIG NO.	(B) ITEM NO.							
11	1	PADZZ	3110-00-828-7683	282741	56232	RACE, INNER	EA	2
11	1	XDDZZ		4000567-1	07187	RACE, OR INNER	EA	2
11	1	XDDZZ		400567-2	07187	RACE, OR INNER	EA	2
11	2	XDDZZ		2582234	07187	ROTOR, GYRO	EA	1
11	3	XDDZZ		20D1069-2	90012	GYRO, STATOR	EA	1
11	4	XDDZZ		2555905	07187	MOTOR, ROTOR	EA	1
11	5	PADDL	6615-00-102-4464	2582149	07187	GYRO ROTOR ASSEMBLY	EA	1
11	6	XDDZZ		2582148	07187	END BELL, INNER GIMBAL	EA	1
11	7	XDDZZ		SR60-2057	11112	RING, ELECTRICAL CONTACT	EA	1
11	8	XDDZZ		244099	07187	TERMINAL BOARD ASSEMBLY	EA	1
11	9	XDDZZ		SMB545434-5	80063	SCREW, MACHINE #1-72 X 1/8	EA	4
11	10	XDDZZ		2582150-1	07187	PLATE, SPACER	EA	1
11	10	XDDZZ		2582150	07187	PLATE, OR SPACER	EA	1
11	11	PADZZ	3110-00-227-3191	282740	56232	BEARING ASSEMBLY	EA	2
11	11	XDDZZ		4000567-11	07187	BEARING OR ASSEMBLY	EA	2
11	11	XDDZZ		4000567-12	07187	BEARING OR ASSEMBLY	EA	2
11	12	XDDZZ		2519310	07187	WASHER	EA	V
11	13	XDDZZ		2519313	07187	SHIM	EA	V
11	13	XDDZZ		2519315	07187	SHIM	EA	V
11	13	XDDZZ		2519314	07187	SHIM	EA	V
11	14	XDDZZ		2519314-1	07187	WASHER	EA	V
11	14	XDDZZ		2519314-2	07187	WASHER	EA	V
11	15	XDDZZ		2519316	07187	NUT, HEXAGONAL	EA	1
11	16	XDDZZ		2519322	07187	PLUG, ADJUSTING	EA	2
11	17	PADZZ	5305-00-026-2123	AN565A2L1	88044	SETSCREW	EA	3
11	18	XDDZZ		SR60-1054	11112	RING, ELECTRICAL CONTACT	EA	1
11	19	XDDZZ		2590214	07187	HOUSING, INNER	EA	1
11	20	XDDZZ		2553266	07187	TERMINAL BOARD ASSEMBLY	EA	1
11	21	XDDZZ		2556886	07187	SCREW, RETAINER	EA	1
11	22	XDDZZ		2556885	07187	SPRING, HELICAL	EA	1
11	23	XDDZZ		2556884	07187	BEARING AND SPRING RETAINER	EA	1
11	24	XDDZZ		SMB493439-1	80063	SCREW, MACHINE, #1-72 X 7/32	EA	4

AMSEL:MAE:qm  
1 OCT 74 6196

HISA-FM2885-74

SECTION II. REPAIR PARTS LIST (CONTINUED)

(1) ILLUSTRATION		(2) SMR CODE	(3) NATIONAL STOCK NUMBER	(4) PART NUMBER	(5) FSCM	(6) DESCRIPTION	(7) UNIT OF MEAS	(8) QTY INC IN UNIT
(A) FIG NO.	(B) ITEM NO.					USABLE ON CODE		
BULK		PAHZZ	4710-00-278-3297	MILT6845	81349	GROUP: 04 BULK MATERIAL TUBE, CORROSION RESISTING STEEL	FT	
BULK		PAHZZ	5970-00-105-3075	MILP18177	81349	INSULATION, SHEET, ELECTRICAL	SQ FT	

SECTION IV. NATIONAL STOCK NUMBER AND PART NUMBER INDEX

STOCK NUMBER	FIG. NO.	ITEM NO.	STOCK NUMBER	FIG. NO.	ITEM NO.
3310-00-227-3191	10	10	5310-00-933-8118	4	10
3110-00-227-3191	11	11	5310-00-933-8118	5	11
3110-00-686-1054	9	15	5310-00-933-8118	7	23
3110-00-828-7683	10	8	5310-00-934-9741	2	45
3110-00-828-7683	11	1	5310-00-934-9748	4	11
4710-00-278-3297	BULK		5310-00-934-9749	2	3
5305-00-026-2123	11	17	5310-00-934-9761	4	12
5305-00-054-5636	8	29	5310-00-938-2013	5	22
5305-00-054-5637	3	6	5310-00-938-2013	7	8
5305-00-054-5637	8	3	5330-00-525-6032	2	26
5305-00-054-5637	9	3	5330-00-640-9612	2	41
5305-00-054-5638	9	3	5340-00-999-6264	4	7
5305-00-054-5640	5	4	5355-00-944-4728	4	3
5305-00-054-5643	5	18	5365-00-715-1152	8	14
5305-00-054-5643	6	46	5905-00-052-7853	7	9
5305-00-054-5646	5	17	5905-00-062-0152	6	35
5305-00-054-5646	7	24	5905-00-067-3249	6	50
5305-00-054-5647	3	9	5905-00-069-3913	7	9
5305-00-054-5647	7	2	5905-00-104-8365	6	51
5305-00-054-5647	8	31	5905-00-106-3666	6	40
5305-00-054-5652	4	23	5905-00-110-7620	6	28
5305-00-057-0498	9	1	5905-00-110-7620	6	41
5305-00-057-0499	9	1	5905-00-111-4727	6	39
5305-00-057-0500	9	13	5905-00-111-4750	6	52
5305-00-145-6948	10	23	5905-00-114-0711	6	28
5305-00-145-7004	10	5	5905-00-116-2394	6	49
5305-00-225-6400	4	4	5905-00-121-9861	6	36
5305-00-543-5832	4	2	5905-00-136-4052	4	1
5305-00-727-8833	3	5	5905-00-136-4052	5	24
5305-00-763-6009	4	15	5905-00-141-0743	6	48
5305-00-770-2533	7	28	5905-00-141-1116	6	47
5305-00-777-6039	7	22	5905-00-141-1132	6	44
5305-00-969-6495	4	18	5905-00-192-3488	6	30
5305-00-969-6495	7	12	5905-00-228-5506	6	28
5306-00-207-5425	5	12	5905-00-681-8818	6	24
5310-00-187-2429	7	7	5905-00-681-8818	6	53
5310-00-576-0546	2	4	5905-00-682-4100	6	21
5310-00-595-6761	3	8	5905-00-686-3129	6	26
5310-00-595-6761	5	6	5905-00-687-1558	2	19
5310-00-595-6761	7	6	5905-00-687-1558	7	5
5310-00-595-6761	9	2	5905-00-763-5329	7	9
5310-00-595-6761	9	26	5905-00-763-6502	7	9
5310-00-722-5998	4	13	5905-00-770-5885	7	9
5310-00-821-5749	2	15	5905-00-814-3981	6	18
5310-00-880-5976	4	19	5905-00-814-3981	7	4
5310-00-928-2690	3	7	5905-00-892-0349	5	14
5310-00-928-2690	5	5	5905-00-892-6315	5	25
5310-00-928-2690	5	23	5905-00-892-6944	6	13
5310-00-928-2690	6	45	5905-00-900-2755	7	9
5310-00-928-2690	8	30	5905-00-952-6823	7	9
5310-00-933-8118	3	10	5905-00-969-5850	7	9

SECTION IV. NATIONAL STOCK NUMBER AND PART NUMBER INDEX (CONTINUED)

STOCK NUMBER	FIG. NO.	ITEM NO.	STOCK NUMBER	FIG. NO.	ITEM NO.
5905-00-975-1127	6	32	5977-00-794-1636	8	10
5905-00-975-1135	6	15	6605-00-099-0135	2	13
5905-00-983-6914	6	34	6605-00-317-7843	2	48
5905-00-984-1468	7	9	6605-00-328-8723	2	49
5905-00-988-2310	7	10	6605-00-328-8724	2	47
5910-00-018-1418	6	17	6605-00-328-8745	2	34
5910-00-018-1418	6	43	6605-00-346-1564	2	21
5910-00-105-1976	6	14	6605-00-346-1567	2	46
5910-00-105-1977	6	43	6605-00-487-4773	1	1
5910-00-574-3793	5	15	6605-00-531-2992	1	2
5910-00-825-8259	6	12	6605-00-610-5452	2	28
5910-00-835-2728	6	2	6605-00-621-9850	2	44
5910-00-835-2728	7	11	6605-00-650-6783	2	32
5910-00-835-2934	7	11	6605-00-654-9683	2	20
5910-00-835-2939	6	2	6605-00-657-0607	2	22
5910-00-835-2939	7	11	6605-00-944-4706	5	27
5910-00-835-2943	7	11	6610-00-032-0163	2	1
5910-00-849-0697	6	38	6610-00-248-1169	5	19
5910-00-882-3174	6	25	6615-00-102-4464	11	5
5910-00-892-7559	5	8	6615-00-167-9757	1	3
5910-00-932-4455	6	29	6615-00-400-2705	7	30
5910-00-944-9811	6	8	6615-00-400-2708	5	26
5910-00-997-4079	6	22	6615-00-400-2708	7	19
5910-00-998-6949	6	10	6615-00-890-3937	8	36
5915-00-420-9169	7	20	6615-00-913-8715	1	3
5930-00-136-1898	4	17	6645-00-770-3742	4	16
5930-00-943-4957	4	17			
5935-00-051-2071	4	14			
5930-00-807-0265	8	7			
5935-00-835-3031	4	6			
5935-00-912-9368	6	31			
5935-00-937-7362	3	1			
5940-00-050-2308	4	8			
5940-00-197-6661	7	27			
5940-00-204-7902	5	10			
5940-00-463-7270	7	26			
5940-00-706-8090	7	25			
5940-00-929-5830	5	13			
5945-00-930-1568	4	24			
5950-00-136-6996	7	13			
5950-00-136-7014	7	14			
5950-00-713-4792	5	16			
5950-00-851-4221	6	6			
5950-00-944-4642	4	21			
5950-00-944-7251	6	5			
5961-00-087-6047	5	2			
5961-00-087-6047	6	42			
5961-00-787-5305	6	16			
5961-00-884-1620	6	27			
5970-00-105-3075	BULK				



SECTION IV. NATIONAL STOCK NUMBER AND PART NUMBER INDEX (continued)

PART NUMBER	FSCM	FIG. NO.	ITEM NO.	PART NUMBER	FSCM	FIG. NO.	ITEM NO.
AC259-10	99932	8	10	MS15795-806	96906	4	19
AN345B8	88044	2	3	MS16624-2073	96906	8	14
AN501-0-2	88044	10	23	MS24693-C1	96906	4	15
AN501-1-2	88044	10	5	MS24693-C25	96906	4	18
AN565A2L1	88044	11	17	MS24693-C25	96906	7	12
AN6227-3	88044	2	41	MS24693-C3	96906	4	4
CL65BL560MP3	81349	5	1	MS24693-C5	96906	4	5
CP09A1KB393K3	81349	6	38	MS3112E16-26P	96906	4	6
CP09A1KE333K3	81349	5	8	MS35233-4	96906	9	3
CSR13C396KM	81349	6	14	MS35234-2	96906	9	1
CSR13D226KM	81349	6	22	MS35234-3	96906	9	1
CSR13E155KM	81349	6	25	MS35249-10	96906	3	5
CSR13E156KM	81349	6	29	MS35249-20	96906	7	28
CSR13F226KM	81349	6	10	MS35338-134	96906	7	7
CSR13F685KM	81349	6	17	MS35338-135	96906	3	10
CSR13F685KM	81349	6	43	MS35338-135	96906	4	10
CSR13G335KM	81349	6	43	MS35338-135	96906	5	11
CTM183VBJ	81349	7	11	MS35338-135	96906	7	23
CTM183VBK	81349	6	2	MS35338-77	96906	3	7
CTM223VBJ	81349	6	2	MS35338-77	96906	5	5
CTM223VBJ	81349	7	11	MS35338-77	96906	5	23
CTM273VBJ	81349	6	2	MS35338-77	96906	6	45
CTM273VBJ	81349	7	11	MS35338-77	96906	8	30
CTM333VBJ	81349	6	2	MS35431-3	96906	4	8
CTM333VBJ	81349	7	11	MS35649-224	96906	5	22
CTM393VBJ	81349	7	11	MS35649-224	96906	7	8
CTM393VBK	81349	6	2	MS35649-24	96906	5	7
CTM473VBJ	81349	6	2	MS35649-224	96906	4	11
CTM473VBJ	81349	7	11	MS35649-264	96906	4	12
CTM563VAJ	81349	6	2	MS51021-11	96906	4	2
CTM563VAJ	81349	7	11	MS51937-12	96906	5	12
CTM683VAJ	81349	6	2	MS51957-12	96906	5	17
CTM683VAJ	81349	6	3	MS51957-12	96906	7	24
CTM683VJB	81349	7	11	MS51957-13	96906	3	9
C980	09798	4	21	MS51957-13	96906	7	2
DE6-124D	99515	8	5	MS51957-13	96906	8	31
DOT25	80223	6	6	MS51957-18	96906	4	23
D136	09798	6	5	MS51957-2	96906	8	29
D400	09798	7	14	MS51957-3	96906	3	6
E3FR912-5C	13934	6	12	MS51957-3	96906	8	3
FTE12	98291	7	26	MS51957-3	96906	9	3
FTSM2C4P16	98291	5	13	MS51957-6	96906	5	4
FTSM28P16	98291	6	23	MS51957-9	96906	5	18
FT039B01	81349	7	25	MS51957-9	96906	6	46
G51H-A-BLK	03296	7	21	MS51958-4	96906	9	13
JAN1N2986B	81350	8	6	MS51959-12	96906	7	22
JAN1N645	81350	5	2	MS75028-22	60418	4	17
JAN1N645	81349	6	42	MS91189-38	96906	5	16
JAN2N718A	81349	6	16	MS93649-224	96906	9	7
K19203D2A	82227	4	16	MS98834-134	96906	9	6
MS15795-802	96906	3	8	MILP18177	81349	BULK	
MS15795-802	96906	5	8	MILT6845	81349	BULK	
MS15795-802	96906	7	6	MS504	00348	7	13
MS15795-802	96906	9	2	RCR07G102JS	81349	6	28
MS15795-802	96906	9	26	RCR07G102JS	81349	6	41
MS15795-803	96906	4	9	RCR07G193JS	81349	6	40
MS15795-805	96906	4	13	RCR07G133JS	81349	6	51

SECTION IV. NATIONAL STOCK NUMBER AND PART NUMBER INDEX (CONTINUED)

PART NUMBER	FSCM	FIG. NO.	ITEM NO.	PART NUMBER	FSCM	FIG. NO.	ITEM NO.
RCR07G272JS	81349	6	39	SMB545480	80063	10	20
RCR07G301JS	81349	6	52	SMB545481	80063	10	15
RCR07G392JS	81349	6	48	SMB545482	80063	10	21
RCR07G472JS	81349	6	28	SMB545483	80063	10	12
RCR07G511JS	81349	6	49	SMB545484	80063	10	11
RCR07G622JS	81349	6	28	SMB545485	80063	10	20
RCR0G752JS	81349	6	44	SMB545486	80063	10	19
RCR20G562JS	81349	6	47	SMB545487-1	80063	10	18
RCR32G102JS	81349	6	36	SMB545487-2	80063	10	18
RC07GF101J	81349	6	13	SMB545489	80063	10	16
RC07GF104J	81349	6	26	SMC493417	80063	9	12
RC07GF153J	81349	6	24	SMC493448	80063	2	8
RC07GF153J	81349	6	53	SMC545469	80063	10	9
RC07GF622J	81349	6	21	SMC545471	80063	10	2
RN60D1000F	81349	7	10	SMC545490	80063	10	17
RN60D1002F	81349	6	34	SMC545530	80063	8	26
RN60D2670F	81349	7	9	SMC545599	80063	2	23
RN60D2740F	81349	7	9	SMC545602	80063	2	7
RN60D2800G	81349	7	9	SMC545615	80063	2	11
RN60D2870F	81349	7	9	SMC545616	80063	2	12
RN60D2940F	81349	7	9	SMD493408	80063	3	11
RN60D3090F	81349	7	9	SMC545682	80063	6	33
RN60D3160F	81349	7	9	SMD493409	80063	8	28
RN60D3240F	81349	7	9	SMD493419	80063	9	10
RN60D3310F	81349	7	9	SMD493442	80063	3	4
RN60D3320F	81349	7	9	SMD545429	80063	8	28
RN60D4222F	81349	6	50	SMD545470	80063	10	3
RN60D8252F	81349	6	35	SMD545474	80063	10	1
RN60D9092F	81349	6	30	SMD545477	80063	10	26
RW59V122	81349	6	32	SMD545492	80063	10	25
RW59V151	81349	5	14	SMD545493	80063	9	10
RW59V821	81349	6	15	SM20-20PGDSL	95238	7	1
R3SSW5VCA00-11	70854	9	15	SM20-20PSLGD	95238	6	31
R3SSW5VCB00-11	70854	9	15	SM20-20SGDS	95238	4	14
R3SSW5VCC00-11	70845	9	15	SM26-20PGDY	95238	8	7
R50AN6KNS	05397	6	8	SM26-20SGDY	95238	8	8
R1341-22	96733	5	15	SR60-1022-1	11112	9	27
SG1172	99186	6	27	SR60-1054	11112	11	18
SMB493439-1	80063	11	24	SR60-2057	11112	11	7
SMB493462	80063	4	22	STSM18C6	98291	6	7
SMB498764	80064	5	21	UH26-20PS	95328	8	27
SMB498765	80063	5	20	WB1005	92819	4	3
SMB498777	80063	7	3	X8058-34GIR5	91506	7	16
SMB498790	80063	7	29	Z96SSW6V0-11	70854	8	24
SMB545387	80063	10	4	048-14	56232	5	9
SMB545434-1	80063	10	13	1N472	99942	9	9
SMB545434-2	80063	9	22	100-300-2-1	99378	6	4
SMB545434-4	80063	9	24	100-300-4A5	99378	6	9
SMB545434-5	80063	11	9	100-300-5-18	99378	6	11
SMB545434-6	80063	10	24	11334	14140	4	17
SMB545434-7	80063	9	18	1200-707-2	11534	4	1
SMB545437	80063	9	11	1200-808-1	11534	4	1
SMB545472	80063	10	7	1200-808-1	11543	5	24
SMB545478	80063	10	22	130630	56232	2	19
SMB545479-1	80063	10	14	1343P	07088	8	12
SMB545479-2	80063	10	14	1-4-2	95987	4	7

HISA-FM 2883-2-74

SECTION IV. NATIONAL STOCK NUMBER AND PART NUMBER INDEX (CONTINUED)

PART NUMBER	FSCM	FIG. NO.	ITEM NO.	PART NUMBER	FSCM	FIG. NO.	ITEM NO.
140861	56232	2	4	2553902	07187	8	16
17850	07187	9	12	2553903	07187	8	20
199353	56232	9	4	2553904	07187	8	33
2N2907A	07263	6	20	2554284-1	07187	8	9
20DL069-2	90012	11	3	2555544	07187	8	13
20D1071-2	90012	8	21	2555905	07187	11	4
20D1072-2	90012	8	32	2555915	07187	9	23
2124-04-00	78189	5	10	2555916-1	07187	9	20
224S1-202	80294	6	18	2556704	07187	9	5
224S1-202	80294	7	4	2556884	07187	11	23
224S1-502	80294	5	25	2556885	07187	11	22
224S1-503	80294	6	19	2556886	07187	11	21
224S1-503	80294	7	5	2579008	07187	8	23
232684	56232	2	17	2581105	07187	8	2
232685	56232	2	18	2582148	07187	11	6
232687	56232	2	33	2582149	07187	11	5
232688	56232	2	21	2582150	07187	11	10
232689	07187	2	22	2582150-1	07187	11	10
232690	56232	2	24	2582191	07187	2	6
232691	07187	2	49	2582234	07187	11	2
232697	07187	2	48	2585883	07187	9	8
232698	56232	2	47	2587134	07187	5	27
232699	56232	2	46	258737-902	07187	3	3
232703	56232	2	29	258745101	07187	1	3
232705	07187	2	39	2587451-3	07187	1	3
232711	56232	2	42	2588596	07187	6	1
232716	56232	2	40	2590056	07187	1	1
232717	56232	2	2	2590057	07187	1	2
232757	07187	2	15	2590214	07187	11	19
232758	07187	2	50	2590281	07187	8	26
232759	56232	2	1	2591237-901	07187	5	26
232764	56232	2	25	2591237-901	07187	7	19
232745	07187	8	34	2591270-901	07187	7	15
233963	07187	8	19	2591281-901	07187	5	19
234A032-3-01	08795	3	2	2591295-901	07187	7	20
244099	07187	11	8	2592482-901	07187	3	3
244698	07187	9	14	2592754-901	07187	7	30
244699	07187	9	14	26-20SGDSK27	95238	3	1
244829	07187	9	14	265640	07187	9	4
249384	56232	2	26	267346	07187	9	21
249385	56232	2	20	2700L101	96791	5	3
2518191	07187	9	17	280989	56232	2	30
2518269	07187	8	11	282740	56232	10	10
2518374	07187	8	15	282740	56232	11	11
2518445	07187	8	18	282741	56232	10	8
2519310	07187	11	12	282741	56232	11	1
2519313	07187	11	13	287274	56232	2	44
2519314	07187	11	13	287276	56232	2	14
2519314-1	07187	11	14	287279	56232	2	36
2519314-2	07187	11	14	287281	56232	2	38
2519315	07187	11	13	2930324	43334	9	16
2519316	07187	11	15	2975003	90012	8	35
2519322	07187	11	16	2975004	90012	8	17
2519756	07187	9	11	3AL669-2R	18915	7	17
254110	56232	2	9	300225	99417	9	25
2553266	07187	10	6	3012	77147	2	5
2553266	07187	11	20	304561	07187	2	35

HISA-FM 2883-2-74

SECTION IV. NATIONAL STOCK NUMBER AND PART NUMBER INDEX (CONTINUED)

PART NUMBER	FSCM	FIG. NO.	ITEM NO.	PART NUMBER	FSCM	FIG. NO.	ITEM NO.
3-16-2-128	95987	4	20				
318843	07187	2	16				
318844	07187	2	13				
319011	56232	2	43				
327303	56232	2	32				
3393-2-03	71279	7	27				
4000567-1	07187	11	1				
4000567-11	07187	11	11				
4000567-12	07187	11	11				
4000567-2	07187	11	1				
6005-15CC	91506	6	37				
662899	07187	9	19				
664201	07187	8	25				
680854	56232	2	10				
680891	07187	2	27				
71GB83R4A10K5	98927	4	24				
718	78452	8	4				
725736	07187	2	34				
807803	07187	2	28				
851335	56232	2	31				
856551	07187	2	37				
871929	07187	8	1				
873106-9	07187	2	45				
875863	07187	8	36				
90950-8	13636	8	22				

RECOMMENDED CHANGES TO EQUIPMENT TECHNICAL MANUALS



SOMETHING WRONG WITH THIS MANUAL?

THEN...JOT DOWN THE DOPE ABOUT IT ON THIS FORM, TEAR IT OUT, FOLD IT AND DROP IT IN THE MAIL!

FROM: (YOUR UNIT'S COMPLETE ADDRESS)

Commander  
Stateside Army Depot  
ATTN: AMSTA-US  
Stateside, N.J. 07703

DATE 10 July 1975

PUBLICATION NUMBER

TM 11-5840-340-12

DATE

23 Jan 74

TITLE

Radar Set AN/APC-76

BE EXACT...PIN-POINT WHERE IT IS

PAGE NO.	PARA-GRAPH	FIGURE NO.	TABLE NO.
----------	------------	------------	-----------

2-25	2-28		
3-10	3-3	3-1	
5-6	5-8		

FO3

IN THIS SPACE TELL WHAT IS WRONG AND WHAT SHOULD BE DONE ABOUT IT:

Recommend that the installation antenna alignment procedure be changed throughout to specify a 2° IFF antenna lag rather than 1°.

REASON: Experience has shown that with only a 1° lag, the antenna servo system is too sensitive to wind gusting in excess of 25 knots, and has a tendency to rapidly accelerate and decelerate as it hunts, causing strain to the drive train. Hunting is minimized by adjusting the lag to 2° without degradation of operation.

Item 5, Function column. Change "2 db" to "3db."

REASON: The adjustment procedure for the TRANS POWER FAULT indicator calls for a 3 db (500 watts) adjustment to light the TRANS POWER FAULT indicator.

Add new step f.1 to read, "Replace cover plate removed in step e.1, above."

REASON: To replace the cover plate.

Zone C 3. On J1-2, change "+24 VDC to "+5 VDC."

REASON: This is the output line of the 5 VDC power supply. + 24 VDC is the input voltage.

TYPED NAME, GRADE OR TITLE, AND TELEPHONE NUMBER

SSG I. M. DeSpirito 999-1776

SIGN HERE:

*SSG I. M. DeSpirito*

DA FORM 2028-2 (TEST) 1 AUG 74

P.S.--IF YOUR OUTFIT WANTS TO KNOW ABOUT YOUR MANUAL "FIND," MAKE A CARBON COPY OF THIS AND GIVE IT TO YOUR HEADQUARTERS.

HISA 1686-75

TEAR ALONG DOTTED LINE



RECOMMENDED CHANGES TO EQUIPMENT TECHNICAL MANUALS



# SOMETHING WRONG WITH THIS MANUAL?

THEN... JOT DOWN THE DOPE ABOUT IT ON THIS FORM, TEAR IT OUT, FOLD IT AND DROP IT IN THE MAIL!

FROM: (YOUR UNIT'S COMPLETE ADDRESS)

DATE

PUBLICATION NUMBER

DATE

TITLE

BE EXACT... PIN-POINT WHERE IT IS

IN THIS SPACE TELL WHAT IS WRONG AND WHAT SHOULD BE DONE ABOUT IT:

PAGE NO.

PARA-GRAPH

FIGURE NO.

TABLE NO.

TEAR ALONG DOTTED LINE

TYPED NAME, GRADE OR TITLE, AND TELEPHONE NUMBER

SIGN HERE:

DA FORM 2028-2 (TEST)  
1 AUG 74

P.S.--IF YOUR OUTFIT WANTS TO KNOW ABOUT YOUR MANUAL "FIND," MAKE A CARBON COPY OF THIS AND GIVE IT TO YOUR HEADQUARTERS.

FILL IN YOUR  
UNIT'S ADDRESS

FOLD BACK

DEPARTMENT OF THE ARMY

OFFICIAL BUSINESS  
PENALTY FOR PRIVATE USE, \$300

POSTAGE AND FEES PAID  
DEPARTMENT OF THE ARMY  
DOD-314



Commander  
US Army Electronics Command  
ATTN: DRSEL-MA-Q  
Fort Monmouth, New Jersey 07703

TEAR ALONG DOTTED LINE

FOLD BACK



RECOMMENDED CHANGES TO EQUIPMENT TECHNICAL MANUALS



# SOMETHING WRONG WITH THIS MANUAL?

THEN... JOT DOWN THE DOPE ABOUT IT ON THIS FORM, TEAR IT OUT, FOLD IT AND DROP IT IN THE MAIL!

FROM: (YOUR UNIT'S COMPLETE ADDRESS)

DATE

PUBLICATION NUMBER

DATE

TITLE

BE EXACT... PIN-POINT WHERE IT IS

IN THIS SPACE TELL WHAT IS WRONG AND WHAT SHOULD BE DONE ABOUT IT:

PAGE NO.	PARA-GRAPH	FIGURE NO.	TABLE NO.
----------	------------	------------	-----------

TEAR ALONG DOTTED LINE

TYPED NAME, GRADE OR TITLE, AND TELEPHONE NUMBER

SIGN HERE:

FILL IN YOUR  
UNIT'S ADDRESS

FOLD BACK

DEPARTMENT OF THE ARMY

OFFICIAL BUSINESS

PENALTY FOR PRIVATE USE, \$300

POSTAGE AND FEES PAID  
DEPARTMENT OF THE ARMY  
DOD-314



Commander  
US Army Electronics Command  
ATTN: DRSEL-MA-Q  
Fort Monmouth, New Jersey 07703

TEAR ALONG DOTTED LINE

FOLD BACK

RECOMMENDED CHANGES TO EQUIPMENT TECHNICAL MANUALS



THEN... JOT DOWN THE DOPE ABOUT IT ON THIS FORM, TEAR IT OUT, FOLD IT AND DROP IT IN THE MAIL!

# SOMETHING WRONG WITH THIS MANUAL?

FROM: (YOUR UNIT'S COMPLETE ADDRESS)

DATE

PUBLICATION NUMBER

DATE

TITLE

BE EXACT... PIN-POINT WHERE IT IS

IN THIS SPACE TELL WHAT IS WRONG AND WHAT SHOULD BE DONE ABOUT IT:

PAGE NO.

PARA-GRAPH

FIGURE NO.

TABLE NO.

TEAR ALONG DOTTED LINE

TYPED NAME, GRADE OR TITLE, AND TELEPHONE NUMBER

SIGN HERE:

DA FORM 2028-2 (TEST)  
1 AUG 74

P.S.--IF YOUR OUTFIT WANTS TO KNOW ABOUT YOUR MANUAL "FIND" MAKE A CARBON COPY OF THIS AND GIVE IT TO YOUR HEADQUARTERS.

FILL IN YOUR  
UNIT'S ADDRESS

FOLD BACK

DEPARTMENT OF THE ARMY

OFFICIAL BUSINESS

PENALTY FOR PRIVATE USE, \$300

POSTAGE AND FEES PAID  
DEPARTMENT OF THE ARMY  
DOD-314



Commander  
US Army Electronics Command  
ATTN: DRSEL-MA-Q  
Fort Monmouth, New Jersey 07703

TEAR ALONG DOTTED LINE

FOLD BACK

By Order of the Secretary of the Army:

**BERNARD W. ROGERS**  
*General, United States Army*  
*Chief of Staff*

Official:

**PAUL T. SMITH**  
*Major General, United States Army*  
*The Adjutant General*

Distribution:

To be distributed in accordance with DA Form 12-36, Organizational Maintenance requirements for AN/ASN-43.





